

Product datasheet for **AP55295SU-N**

spict Rabbit Polyclonal Antibody

Product data:

Product Type:	Primary Antibodies
Applications:	ELISA, IHC, IP, WB
Recommended Dilution:	Immunohistochemistry: 1/200 - 1/1000. ELISA. Western Blot: 1/500 - 1/5000.
Reactivity:	Drosophila
Host:	Rabbit
Clonality:	Polyclonal
Immunogen:	Synthetic peptide derived from an internal domain of Spict protein from Drosophila melanogaster
Specificity:	This antibody reacts with Drosophila melanogaster 42 kDa spict protein.
Formulation:	0.1M Tris, 0.1M Glycine and 2% Sucrose State: Serum State: Lyophilized serum
Reconstitution Method:	Restore in distilled water.
Conjugation:	Unconjugated
Storage:	Prior to reconstitution store at -20°C. Following reconstitution store undiluted at 2-8°C for one month or (in aliquots) at -20°C for longer. Avoid repeated freezing and thawing.
Stability:	Shelf life: one year from despatch.
Database Link:	Q9VK62

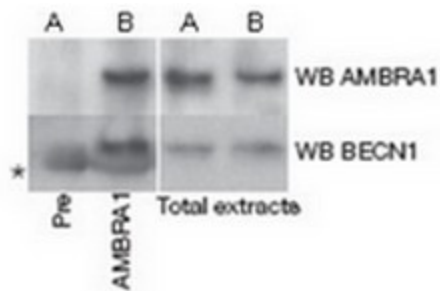
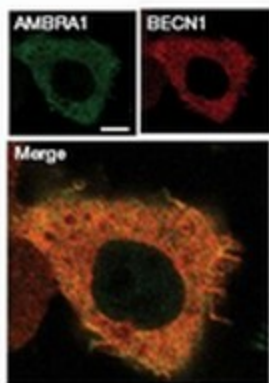


[View online »](#)

Product images:



Western Blots of whole fly extracts using AP55295SU-N



Protein extract from two E14.5 wild type brains (A&B) were immunoprecipitated using anti-AMBRA1 pab (AP55295SU-N) or the pre-immun serum (Pre).