

## Product datasheet for **AP55282SU-N**

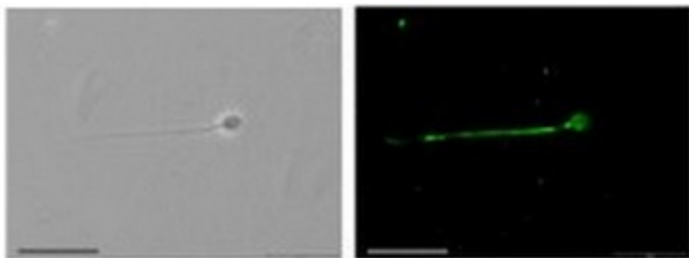
### Nav1.8 (SCN10A) Rabbit Polyclonal Antibody

#### Product data:

Product Type:	Primary Antibodies
Applications:	ELISA, IF, IHC, WB
Recommended Dilution:	<b>Immunohistochemistry:</b> 1/100 - 1/1000. <b>ELISA.</b> <b>Western Blot:</b> 1/500 - 1/5000.
Reactivity:	Human
Host:	Rabbit
Clonality:	Polyclonal
Immunogen:	Synthetic peptide derived from C-term domain of SCNA10 protein
Specificity:	This antibody reacts with 220 kDa SCN10A protein.
Formulation:	0.1M Tris, 0.1M Glycine and 2% Sucrose State: Serum State: Lyophilized serum
Reconstitution Method:	Restore in distilled water.
Conjugation:	Unconjugated
Storage:	Prior to reconstitution store at -20°C. Following reconstitution store undiluted at 2-8°C for one month or (in aliquots) at -20°C for longer. Avoid repeated freezing and thawing.
Stability:	Shelf life: one year from despatch.
Gene Name:	sodium voltage-gated channel alpha subunit 10
Database Link:	<a href="#">Entrez Gene 6336 Human</a> <a href="#">Q9Y5Y9</a>
Synonyms:	hPN3; Nav1.8; PN3; SNS



[View online »](#)

**Product images:**

Immunofluorescence and corresponding phase-contrast images of sperm cells stained with primary antibody against SCN10A and Nax showing specific localizations for each Na<sup>+</sup> channel