

Product datasheet for **AP55276PU-N**

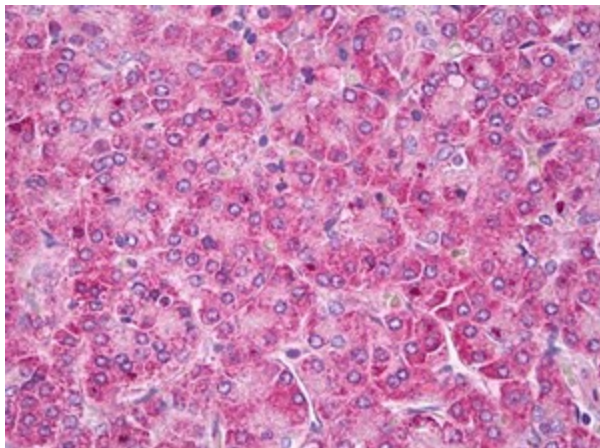
SCN1A Rabbit Polyclonal Antibody

Product data:

Product Type:	Primary Antibodies
Applications:	ELISA, IHC, WB
Recommended Dilution:	Immunohistochemistry: 1/100 - 1/1000. ELISA. Western Blot: 1/1000 - 1/5000.
Reactivity:	Human, Mouse, Rat
Host:	Rabbit
Clonality:	Polyclonal
Immunogen:	Synthetic peptide derived from SCN1A protein
Specificity:	This antibody reacts with 230 kDa SCN1A protein.
Formulation:	0.1M Tris, 0.1M Glycine and 2% Sucrose State: Purified State: Lyophilized purified powder
Reconstitution Method:	Restore in distilled water.
Purification:	Affinity chromatography on Protein A
Conjugation:	Unconjugated
Storage:	Prior to reconstitution store at -20°C. Following reconstitution store undiluted at 2-8°C for one month or (in aliquots) at -20°C for longer. Avoid repeated freezing and thawing.
Stability:	Shelf life: one year from despatch.
Gene Name:	sodium voltage-gated channel alpha subunit 1
Database Link:	Entrez Gene 6323 Human P35498
Synonyms:	NAC1, SCN1



[View online »](#)

Product images:

Pancreas stained in IHC-P with SCN1A antibody