

Product datasheet for **AP55247PU-N**

RAI3 (GPCR5A) Rabbit Polyclonal Antibody

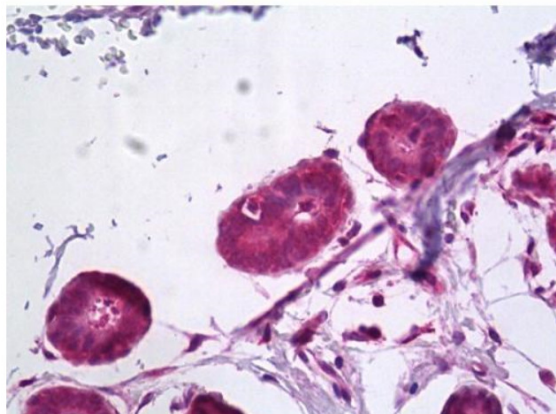
Product data:

Product Type:	Primary Antibodies
Applications:	ELISA, IHC, WB
Recommended Dilution:	Immunohistochemistry: 1/100 - 1/500. ELISA. Western Blot: 1/200 to 1/1000.
Reactivity:	Human
Host:	Rabbit
Clonality:	Polyclonal
Immunogen:	Synthetic peptide derived from human N terminal region of Retinoic acid-induced protein 3 (RAI3)
Specificity:	This antibody reacts with 40 kDa RAI3 protein
Formulation:	0.1M Tris, 0.1M Glycine and 2% Sucrose State: Purified State: Lyophilized purified powder Preservative: None
Reconstitution Method:	Restore in distilled water.
Concentration:	lot specific
Purification:	Affinity chromatography on Protein A
Conjugation:	Unconjugated
Storage:	Prior to reconstitution store at -20°C. Following reconstitution store undiluted at 2-8°C for one month or (in aliquots) at -20°C for longer. Avoid repeated freezing and thawing.
Stability:	Shelf life: one year from despatch.
Gene Name:	G protein-coupled receptor class C group 5 member A
Database Link:	Entrez Gene 9052 Human Q8NFJ5
Synonyms:	Retinoic acid-induced protein 3, G-protein coupled receptor C5A, PEIG-1, RAIG1, GPCR5A



[View online »](#)

Product images:



Human Breast stained with RAI3 antibody Cat.-No AP55247PU-N