

Product datasheet for **AP55218PU-N**

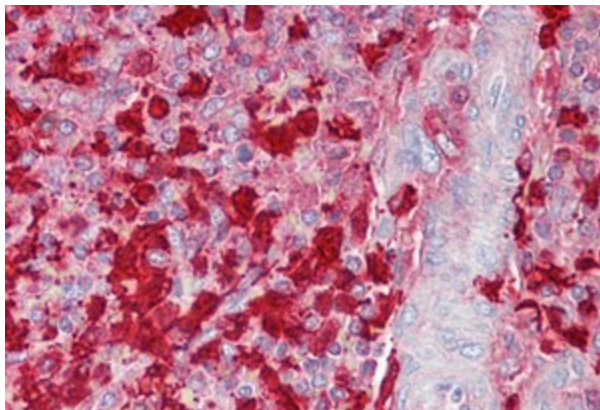
S100A9 Rabbit Polyclonal Antibody

Product data:

Product Type:	Primary Antibodies
Applications:	ELISA, IHC, WB
Recommended Dilution:	ELISA. Immunohistochemistry: 1/50 - 1/500. Western Blot: 1/200 - 1/2000.
Reactivity:	Human, Mouse
Host:	Rabbit
Clonality:	Polyclonal
Immunogen:	Synthetic peptide derived from C-terminal domain of Human Protein S100-A9
Specificity:	This antibody reacts with Human 13 kDa Protein S100-A9.
Formulation:	0.1M Tris, 0.1M Glycine, 2% Sucrose State: Purified State: Lyophilized purified powder Preservative: None
Reconstitution Method:	Restore in distilled water.
Concentration:	lot specific
Purification:	Affinity Chromatography on Protein A
Conjugation:	Unconjugated
Storage:	Store lyophilized at 2-8°C for 6 months or at -20°C long term. After reconstitution store the antibody undiluted at 2-8°C for one month or (in aliquots) at -20°C long term. Avoid repeated freezing and thawing.
Stability:	Shelf life: one year from despatch.
Gene Name:	S100 calcium binding protein A9
Database Link:	Entrez Gene 6280 Human P06702
Synonyms:	S100-A9, CAGB, MRP-14



[View online »](#)

Product images:

Spleen stained in Immunohistochemistry on Paraffin Sections with S100A9 antibody