

Product datasheet for **AP55204PU-N**

GPR73B (PROKR2) Rabbit Polyclonal Antibody

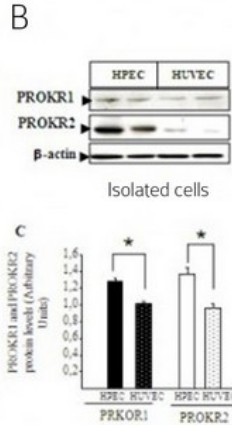
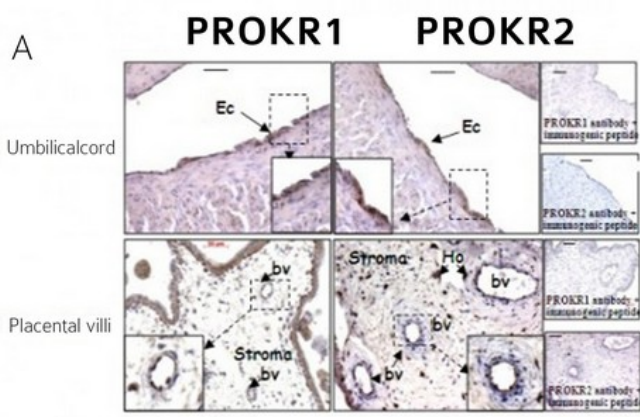
Product data:

Product Type:	Primary Antibodies
Applications:	ELISA, IF, IHC, WB
Recommended Dilution:	ELISA. Flow Cytometry: 1/100. Immunohistochemistry: 1/100 - 1/1000. Western Blot: 1/200.
Reactivity:	Human
Host:	Rabbit
Clonality:	Polyclonal
Immunogen:	Synthetic peptide derived from N terminal region of human prokineticin receptor-2
Specificity:	This antibody reacts with 44 kDa prokineticin receptor-2.
Formulation:	0.1M Tris, 0.1M Glycine, 2% Sucrose State: Purified State: Lyophilized purified powder
Reconstitution Method:	Restore in distilled water.
Concentration:	lot specific
Purification:	Affinity chromatography on Protein A
Conjugation:	Unconjugated
Storage:	Prior to reconstitution store at -20°C. Following reconstitution store undiluted at 2-8°C for one month or (in aliquots) at -20°C for longer. Avoid repeated freezing and thawing.
Stability:	Shelf life: one year from despatch.
Gene Name:	prokineticin receptor 2
Database Link:	Entrez Gene 128674 Human Q8NFJ6
Synonyms:	PK-R2, G-protein coupled receptor 73-like 1, GPRg2, PROKR2, GPR73L1, PKR2

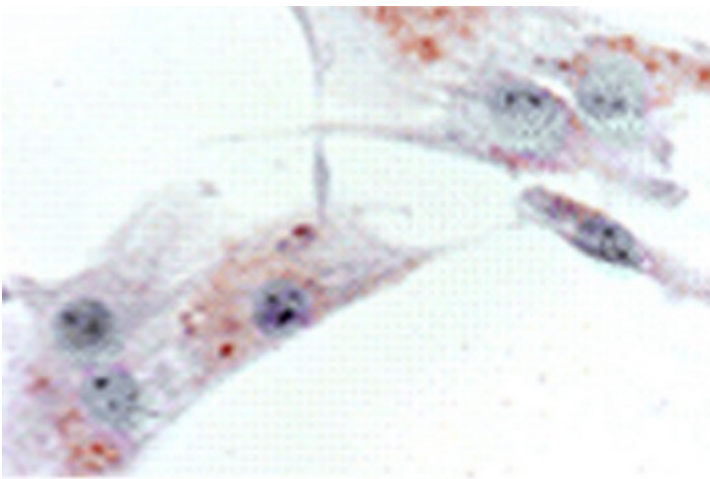


[View online »](#)

Product images:



PROKR1 and PROKR2 protein expression in placental-tissue, umbilical cord and in isolated HPECs and HUVECs (A) Immunohystochemistry of chorionic vili and umbilical cord sections using antibodies to PROKR1 and PROKR2. (B)Western Blot analysis of HPEC and HUVEC cells using PROKR1 and PROKR2 antibodies (C) Diagram showing levels of PROKR1 and PROKR2 protein expressions



Immunocytochemical localization of PKR2 in fasciculata cells