

Product datasheet for **AP55202PU-N**

GPR73A (PROKR1) Rabbit Polyclonal Antibody

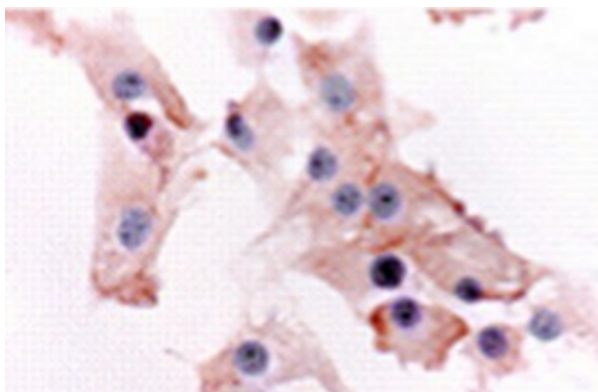
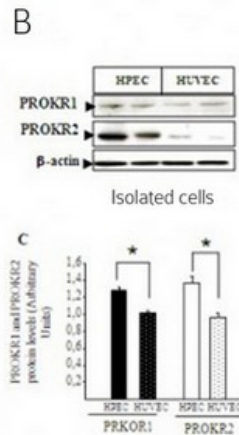
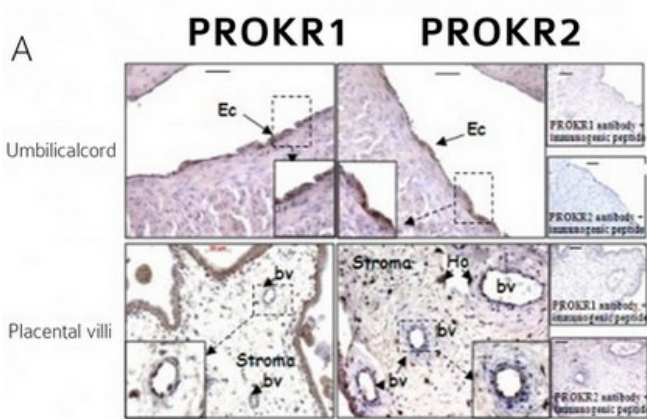
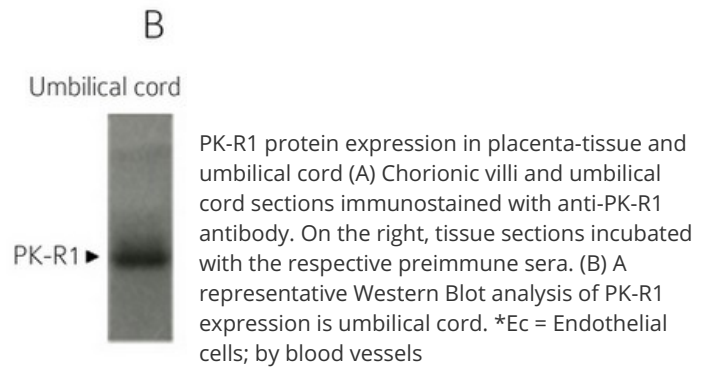
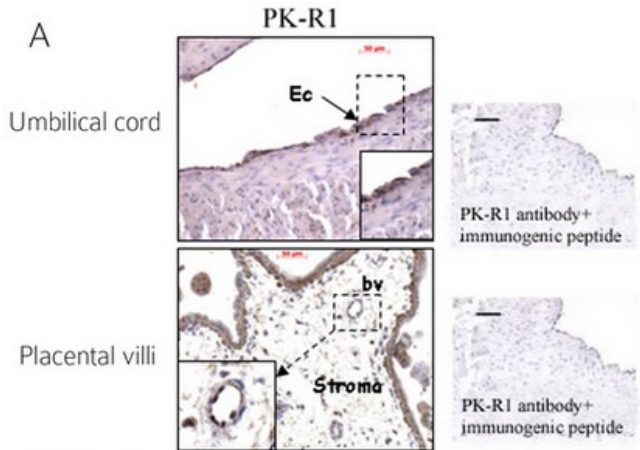
Product data:

Product Type:	Primary Antibodies
Applications:	ELISA, FC, IF, IHC, WB
Recommended Dilution:	ELISA. Flow Cytometry: 1/100. Immunohistochemistry: 1/100 - 1/1000. Western Blot: 1/200.
Reactivity:	Human
Host:	Rabbit
Clonality:	Polyclonal
Immunogen:	Synthetic peptide derived from N terminal region of human prokineticin receptor 1.
Specificity:	This antibody reacts with 45 kDa prokineticin receptor- 1.
Formulation:	0.1M Tris, 0.1M Glycine, 2% Sucrose State: Purified State: Lyophilized purified powder
Reconstitution Method:	Restore in distilled water.
Concentration:	lot specific
Conjugation:	Unconjugated
Storage:	Prior to reconstitution store at -20°C. Following reconstitution store undiluted at 2-8°C for one month or (in aliquots) at -20°C for longer. Avoid repeated freezing and thawing.
Stability:	Shelf life: one year from despatch.
Gene Name:	prokineticin receptor 1
Database Link:	Entrez Gene 10887 Human Q8TCW9
Synonyms:	PK-R1, PROKR1, PKR1, G-protein coupled receptor 73, ZAQ, GPR73a



[View online »](#)

Product images:



Immunocytochemical localization of PKR1 in fasciculata cells