

Product datasheet for **AP55200SU-N**

Prokineticin 1 (PROK1) Rabbit Polyclonal Antibody

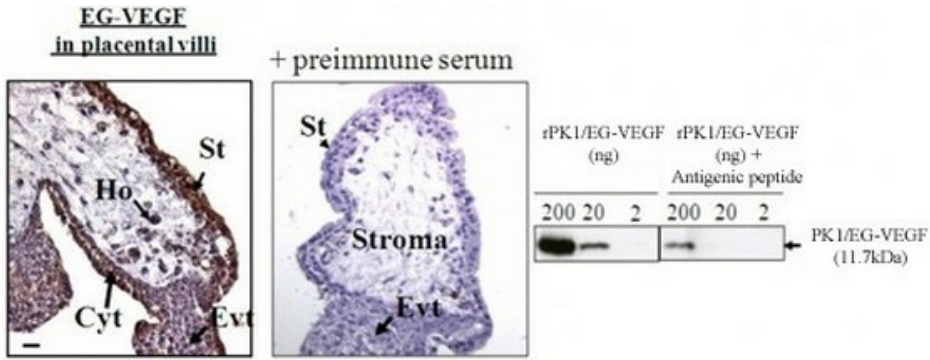
Product data:

Product Type:	Primary Antibodies
Applications:	ELISA, IHC, WB
Recommended Dilution:	ELISA. Flow Cytometry: 1/100. Immunohistochemistry: 1/100 - 1/1000. Western Blot: 1/200.
Reactivity:	Human
Host:	Rabbit
Clonality:	Polyclonal
Immunogen:	Synthetic peptide derived from N- term domain of the Human prokinectin 1 protein.
Specificity:	This antibody reacts with prokinectin 1.
Formulation:	State: Serum State: Lyophilized Serum
Reconstitution Method:	Restore in distilled water.
Conjugation:	Unconjugated
Storage:	Prior to reconstitution store at -20°C. Following reconstitution store undiluted at 2-8°C for one month or (in aliquots) at -20°C for longer. Avoid repeated freezing and thawing.
Stability:	Shelf life: one year from despatch.
Gene Name:	prokineticin 1
Database Link:	Entrez Gene 84432 Human P58294
Synonyms:	Prokineticin-1, Prokineticin 1, Mambakine, EG-VEGF



[View online »](#)

Product images:



A: chondric villi at 9 weeks of gestation immunostained (brown staining) with anti-PK1/EG-VEGF antibody 0, 33 ug/ml. B: negativ control treated preimmune serum. All sections were vounterstained with heamatoxylin. Cytotrophoblast (Cyt), Hobfauer cells (Ho), Ectravillous trophoblast (EVT), Syncytiotrophoblast (St) C: Sensitivity of PK1/EG-VEGF antibody tested by Western Blot on indicated quantities of recombinant human OK1/EG-VEGF. The specificity was tested in the presence of 9, 6 ug/ml antigenic peptide.