

Product datasheet for **AP55147PU-N**

PADI1 (specific epitope) Rabbit Polyclonal Antibody

Product data:

Product Type:	Primary Antibodies
Applications:	ELISA, IHC, WB
Recommended Dilution:	ELISA. Western Blot: 1/200-1/1000. Immunohistochemistry: 1/200-1/1000.
Reactivity:	Human
Host:	Rabbit
Clonality:	Polyclonal
Immunogen:	Synthetic peptide derived from a domain specific for Human Peptidylarginine Deiminase type 1 protein
Specificity:	This antibody reacts with Human PADI1. Cross reactivity with other PADI isoforms was not yet tested.
Formulation:	0.1M Tris, 0.1M Glycine and 2% Sucrose State: Purified State: Lyophilized purified antibody Preservative: None
Reconstitution Method:	Restore in distilled water.
Concentration:	lot specific
Purification:	Affinity Chromatography on Protein A
Conjugation:	Unconjugated
Storage:	Prior to reconstitution store the antibody at -20°C. Store reconstituted antibody at 2-8°C for one month or (in aliquots) at -20°C for longer Avoid repeated freezing and thawing.
Stability:	Shelf life: one year from despatch.
Gene Name:	peptidyl arginine deiminase 1
Database Link:	Entrez Gene 29943 Human Q9ULC6



[View online »](#)

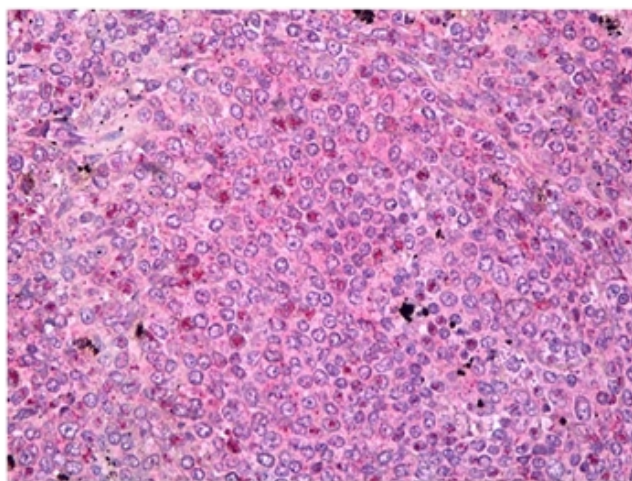
Background: Peptidylarginine deiminases (PADs) convert arginine residues in proteins into citrullines. They are suspected to be involved in multiple sclerosis and rheumatoid arthritis pathophysiology, and they play a role in epidermis homeostasis and possibly in regulation of gene expression through histone modification. In humans, five isoforms encoded by the genes PADI1-4, 6 are known so far.

Synonyms: PDI1, PAD1, HPAD10

Product images:



Immunodetection of PAD type 1 using PADI1 antibody in Human epidermis as a 70 kDa protein.



??Spleen stained with PADI1 antibody Cat.-No AP55147PU-N in Immunohistochemistry on Paraffin Sections.