

Product datasheet for **AP55130SU-N**

PARD6B Rabbit Polyclonal Antibody

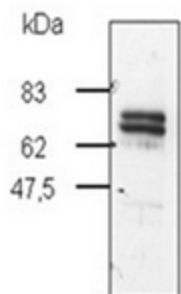
Product data:

Product Type:	Primary Antibodies
Applications:	ELISA, IHC, WB
Recommended Dilution:	ELISA. Western Blot: 1/200-1/1000.
Reactivity:	Human
Host:	Rabbit
Clonality:	Polyclonal
Immunogen:	Synthetic peptide derived from N-terminal region of PAR6 protein
Specificity:	This antibody reacts specifically with 41 Da of Human protein.
Formulation:	State: Serum State: Lyophilized serum Preservative: None
Reconstitution Method:	Restore in 0.2 ml distilled water.
Conjugation:	Unconjugated
Storage:	Prior to reconstitution store the antibody at -20°C. Store the reconstituted antibody at 2-8°C for one month or (in aliquots) at -20°C for longer. Avoid repeated freezing and thawing.
Stability:	Shelf life: one year from despatch.
Gene Name:	par-6 family cell polarity regulator beta
Database Link:	Entrez Gene 84612 Human Q9BYG5
Background:	PARD6B is an adapter protein involved in asymmetrical cell division and cell polarization processes. It is probably involved in the formation of epithelial tight junctions. Association with PARD3 may prevent the interaction of PARD3 with F11R/JAM1, thereby preventing tight junction assembly. The PARD6-PARD3 complex links GTP-bound Rho small GTPases to atypical protein kinase C proteins.
Synonyms:	PAR6B, PAR-6B, PAR-6 beta

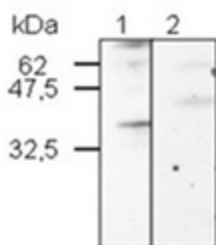


[View online »](#)

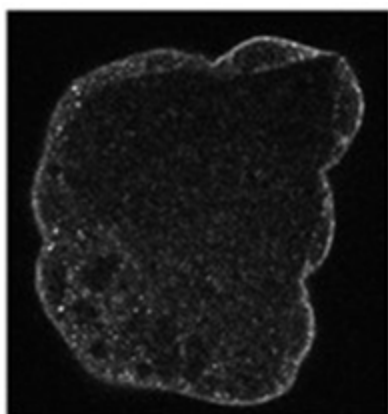
Product images:



Western Blot of Yeast extract transformed with a vector encoding Murine PARD6 fused to LexA tag and probed with PARD6B antibody Cat.-No AP55130SU-N



Western Blot of Human A431 cell lysate (18 ug) probed with PARD6B antibody Cat.-No AP55130SU-N (Lane 1) and the same antibody Cat.-No AP55130SU-N preincubated with the immunogenic peptide (Lane 2)



Mouse blastocyst stained with anti-PARD6B antibody