

Product datasheet for **AP55120SU-N**

Claudin-11 / CLDN11 Oligodendrocyte Rabbit Polyclonal Antibody

Product data:

Product Type:	Primary Antibodies
Applications:	ELISA, IF, IHC, WB
Recommended Dilution:	ELISA. Western Blot: 1/200-1/5000. Immunocytochemistry: 1/400. Immunohistochemistry: 1/50-1/500.
Reactivity:	Rat
Host:	Rabbit
Clonality:	Polyclonal
Immunogen:	A 15 residue synthetic peptide derived from C-terminal domain of 22 kDa Claudin-11
Specificity:	Reacts with Rat 22 kDa OSP protein derived from CNS samples
Formulation:	State: Serum State: Lyophilized serum Preservative: None
Reconstitution Method:	Restore in 0.2 ml distilled water.
Conjugation:	Unconjugated
Storage:	Prior to reconstitution store the antibody at -20°C. Store reconstituted antibody at 2-8°C for one month or (in aliquots) at -20°C for longer Avoid repeated freezing and thawing.
Stability:	Shelf life: one year from despatch.
Database Link:	Q99P82



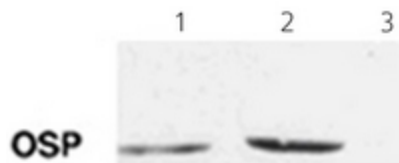
[View online »](#)

Background:

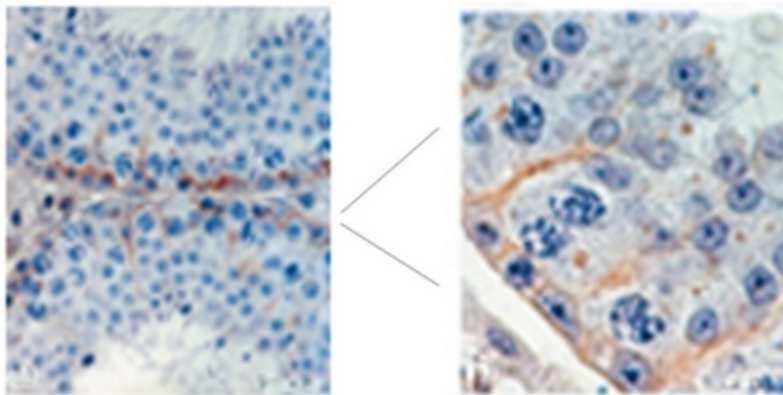
Oligodendrocyte specific protein belongs is a major component of central nervous system myelin that is necessary for normal CNS function. The claudin superfamily consists of many structurally related proteins in humans. These proteins, which include claudin 1 through 18, and are located in both epithelial and endothelial cells in all tight junction bearing tissues. Claudins, which consist of four transmembrane domains and two extracellular loops, make up tight junction strands. There is growing evidence that the Claudin 11 protein determines the permeability between layers of myelin sheaths via focal adhesion and with its expression highly regulated during development, may play an important role in cellular proliferation and migration. In addition, the protein is a candidate autoantigen in the development of autoimmune demyelinating disease.

Synonyms:

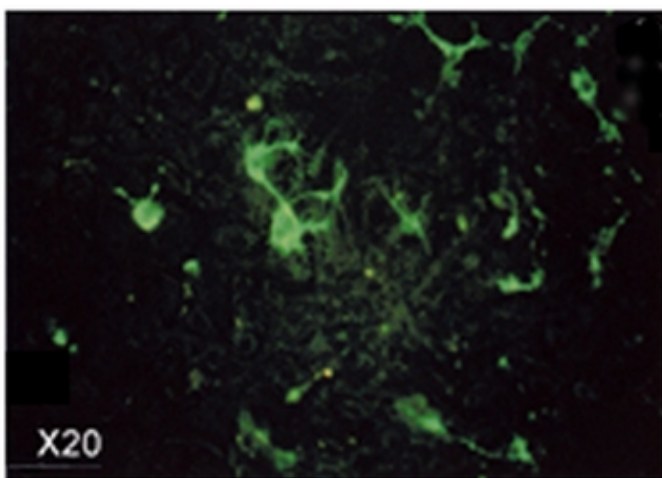
OSP, OTM

Product images:

Western blot analysis using OSP antibody Cat.-No AP55120SU-N: Lane 1: Tissue lysate from brain. Lane 2: Testis. Lane 3: OSP Antibody Cat.-No AP55120SU-N with blocking peptide.



Seminiferous tubules stained in Immunohistochemistry with OSP antibody Cat.-No AP55120SU-N



Cortical Rat newborn cells stained in Immunofluorescence withOSP AntibodyCat.-NoAP55120SU-N