

## Product datasheet for **AP55081PU-N**

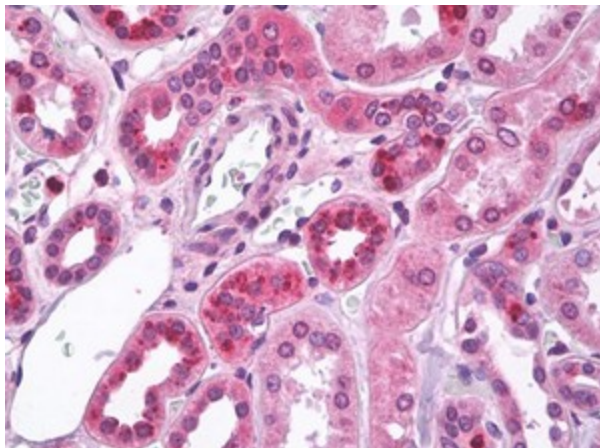
### **MBD2 Rabbit Polyclonal Antibody**

#### **Product data:**

Product Type:	Primary Antibodies
Applications:	ELISA, IHC, IP, WB
Recommended Dilution:	<b>Immunohistochemistry:</b> 1/200 - 1/1000. <b>ELISA.</b> <b>Western Blot:</b> 1/500 - 1/5000.
Reactivity:	Human
Host:	Rabbit
Clonality:	Polyclonal
Immunogen:	Synthetic peptide derived from internal domain of MBD2 human protein
Specificity:	This antibody reacts with 43 kDa MBD2 protein.
Formulation:	0.1M Tris, 0.1M Glycine, 2% Sucrose State: Purified State: Lyophilized purified powder
Reconstitution Method:	Restore in distilled water.
Concentration:	lot specific
Purification:	Affinity chromatography on Protein A
Conjugation:	Unconjugated
Storage:	Prior to reconstitution store at -20°C. Following reconstitution store undiluted at 2-8°C for one month or (in aliquots) at -20°C for longer. Avoid repeated freezing and thawing.
Stability:	Shelf life: one year from despatch.
Gene Name:	methyl-CpG binding domain protein 2
Database Link:	<a href="#">Entrez Gene 8932 Human</a> <a href="#">Q9UBB5</a>
Synonyms:	Methyl-CpG-binding domain protein 2, Demethylase, DMTase



[View online »](#)

**Product images:**

Kidney stained in IHC-P with MBD2 antibody