

## Product datasheet for **AP55072SU-N**

### Meckelin (TMEM67) Rabbit Polyclonal Antibody

#### Product data:

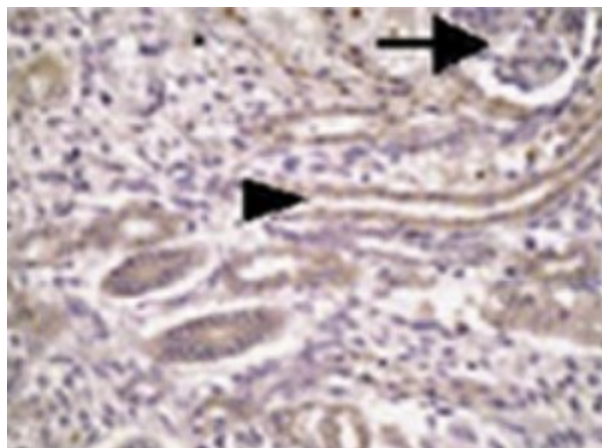
Product Type:	Primary Antibodies
Applications:	ELISA, IHC, WB
Recommended Dilution:	<b>Immunohistochemistry:</b> 1/50 - 1/200. <b>ELISA.</b> <b>Western Blot:</b> 1/100 - 1/1000.
Reactivity:	Human
Host:	Rabbit
Clonality:	Polyclonal
Immunogen:	Synthetic peptide derived from C-term domain of human MKS3 protein
Specificity:	This antibody reacts with 111 kDa MKS3 protein.
Formulation:	State: Serum State: Lyophilized serum
Reconstitution Method:	Restore in distilled water.
Conjugation:	Unconjugated
Storage:	Prior to reconstitution store at -20°C. Following reconstitution store undiluted at 2-8°C for one month or (in aliquots) at -20°C for longer. Avoid repeated freezing and thawing.
Stability:	Shelf life: one year from despatch.
Gene Name:	transmembrane protein 67
Database Link:	<a href="#">Entrez Gene 91147 Human Q5HYA8</a>
Synonyms:	TMEM67, MKS3



[View online »](#)

**Product images:**

Immunodetection of Mckerlin (120 kDa) in whole cell extracts of HEK293 cells using AP55072SU-N



Immunohistochemical staining of kidney tissue sections with AP55072SU-N