

## Product datasheet for **AP55070SU-N**

### Measles virus (Nucleoprotein) Rabbit Polyclonal Antibody

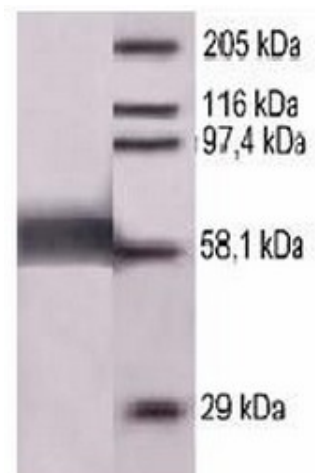
#### Product data:

Product Type:	Primary Antibodies
Applications:	ELISA, IHC, WB
Recommended Dilution:	<b>ELISA:</b> 1/2000-1/10000. <b>Western Blot:</b> 1/200-1/1000. <b>Immunohistochemistry:</b> 1/100-1/500.
Reactivity:	Measles Virus
Host:	Rabbit
Clonality:	Polyclonal
Immunogen:	Recombinant NP
Specificity:	This antibody reacts with Measles 60 kDa Nucleoprotein.
Formulation:	State: Serum State: Lyophilized Serum
Reconstitution Method:	Restore in distilled water.
Conjugation:	Unconjugated
Storage:	Prior to reconstitution store at -20°C. Following reconstitution store undiluted at 2-8°C for one month or (in aliquots) at -20°C for longer. Avoid repeated freezing and thawing.
Stability:	Shelf life: one year from despatch.
Synonyms:	Rubeola virus



[View online »](#)

## Product images:



Immunoblot analysis of purified recombinant NP  
(1 g/10% SDS-PAGE)