

Product datasheet for **AP55042PU-N**

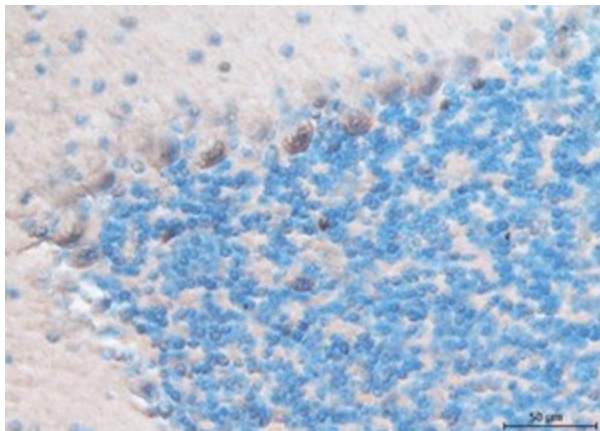
KALRN Rabbit Polyclonal Antibody

Product data:

Product Type:	Primary Antibodies
Applications:	ELISA, IHC, WB
Recommended Dilution:	ELISA. Western Blot. Immunohistochemistry.
Reactivity:	Human
Host:	Rabbit
Clonality:	Polyclonal
Immunogen:	Synthetic peptides derived from Cter domain of human Kalirin protein
Specificity:	This antibody reacts with the 192 kDa Kalirin protein.
Formulation:	Tris 0,1M, glycine 0,1M, sucrose 2% State: Purified State: Lyophilized purified powder
Reconstitution Method:	Restore in distilled water.
Purification:	Affinity chromatography on Protein A
Conjugation:	Unconjugated
Storage:	Prior to reconstitution store at -20°C. Following reconstitution store undiluted at 2-8°C for one month or (in aliquots) at -20°C for longer. Avoid repeated freezing and thawing.
Stability:	Shelf life: one year from despatch.
Gene Name:	kalirin, RhoGEF kinase
Database Link:	Entrez Gene 8997 Human O60229
Synonyms:	Protein Duo, Serine/threonine-protein kinase with Dbl- and pleckstrin homology domain



[View online »](#)

Product images:

Paraffin embedded mouse brain section preterated with citrate stained with 10 ug/ml of anti-Kalirin antibody (AP55042PU-N)Kalirin is detected in the cytoplasm of Parkinje cells and the cerebellum.