

## Product datasheet for **AP55040PU-N**

### **SAM68 (KHDRBS1) Rabbit Polyclonal Antibody**

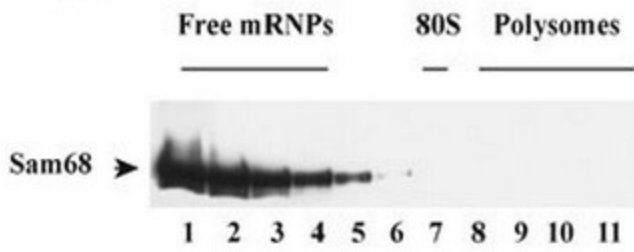
#### **Product data:**

Product Type:	Primary Antibodies
Applications:	ELISA, IF, IHC, IP, WB
Recommended Dilution:	<b>Immunoprecipitation:</b> 1/50. <b>ELISA.</b> <b>Western Blot:</b> 1/500 - 1/2000. <b>Immunohistochemistry.</b> <b>Immunofluorescence:</b> 1/100 - 1/500.
Reactivity:	Human
Host:	Rabbit
Clonality:	Polyclonal
Immunogen:	Recombinant Sam68 protein
Specificity:	This antibody reacts with 68 kDa Sam68 protein.
Formulation:	Tris 0,1M, glycine 0,1M, sucrose 2% State: Purified State: Lyophilized purified powder
Reconstitution Method:	Restore in distilled water.
Purification:	Affinity chromatography on Protein A
Conjugation:	Unconjugated
Storage:	Prior to reconstitution store at -20°C. Following reconstitution store undiluted at 2-8°C for one month or (in aliquots) at -20°C for longer. Avoid repeated freezing and thawing.
Stability:	Shelf life: one year from despatch.
Gene Name:	KH RNA binding domain containing, signal transduction associated 1
Database Link:	<a href="#">Entrez Gene 10657 Human Q07666</a>
Synonyms:	FLJ34027; p62; p68; SAM68

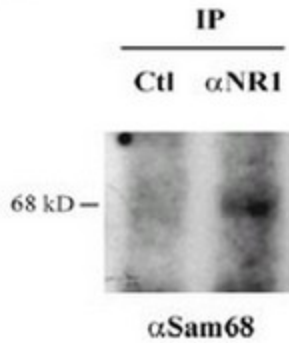


[View online »](#)

Product images:



Sam68 associated with polysomal RNA and RNA granules. Visualised with AP55040PU-N. Each line represent a fraction of cytoplasmic extract from neurons.



Immunoprecipitation with anti NR1 or control Western blot anti Sam68