

Product datasheet for **AP55013SU-N**

SUV420h1 (KMT5B) Rabbit Polyclonal Antibody

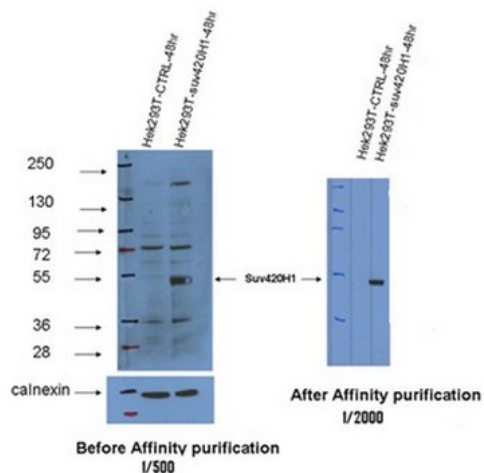
Product data:

Product Type:	Primary Antibodies
Applications:	ELISA, IHC, WB
Recommended Dilution:	ELISA. Western Blot. Immunohistochemistry.
Reactivity:	Human
Host:	Rabbit
Clonality:	Polyclonal
Immunogen:	Synthetic peptides derived from internal domains of the human SUV420H1 protein
Specificity:	This antibody reacts with the 99 kDa SUV420H1 protein.
Formulation:	State: Serum State: Lyophilized serum
Reconstitution Method:	Restore in distilled water.
Conjugation:	Unconjugated
Storage:	Prior to reconstitution store at -20°C. Following reconstitution store undiluted at 2-8°C for one month or (in aliquots) at -20°C for longer. Avoid repeated freezing and thawing.
Stability:	Shelf life: one year from despatch.
Gene Name:	lysine methyltransferase 5B
Database Link:	Entrez Gene 51111 Human Q4FZB7
Synonyms:	Lysine N-methyltransferase 5B



[View online »](#)

Product images:



Suv420H1 antibody (AP55013SU-N) recognized ectopically expressed small isoform of human Suv420H1 protein