

Product datasheet for **AP55004PU-N**

Histone H3 (Citrulline Arg2, 8, 17) Rabbit Polyclonal Antibody

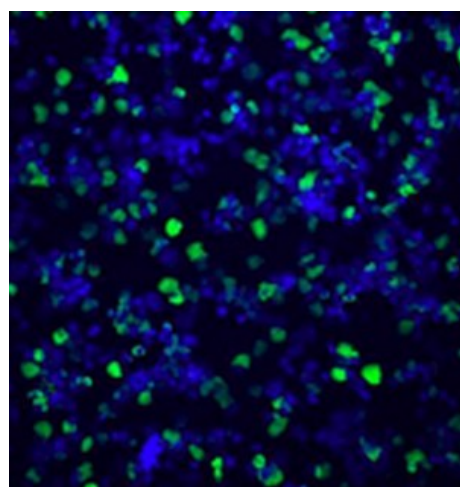
Product data:

Product Type:	Primary Antibodies
Applications:	ELISA, IF, IHC, WB
Recommended Dilution:	ELISA. Western Blot: 1/200-1/1000. Immunohistochemistry: 1/100-1/500.
Reactivity:	Human
Host:	Rabbit
Clonality:	Polyclonal
Immunogen:	Synthetic peptide derived from N-terminal domain of Human Histone H3 containing Citrulline at position 2-8-17
Specificity:	This antibody reacts with Histone H3 Citrulline at the 3 positions: 2, 8 and 17. Reacts with mono or bis H3-Cit.
Formulation:	0.1M Tris, 0.1M Glycine and 2% Sucrose State: Purified State: Lyophilized purified IgG fraction Preservative: None
Reconstitution Method:	Restore in distilled water.
Concentration:	lot specific
Purification:	Affinity Chromatography on Protein A
Conjugation:	Unconjugated
Storage:	Prior to reconstitution store at -20°C. Following reconstitution store undiluted at 2-8°C for one month or (in aliquots) at -20°C for longer. Avoid repeated freezing and thawing.
Stability:	Shelf life: one year from despatch.
Synonyms:	H3 Histone family, HIST1H3



[View online »](#)

Product images:



HL60 cells treated with DMSO and Calcimycin.
Green: anti citrullinated Histone H3 (R2, R8, R17)
Blue: Hoechst