

Product datasheet for **AP54998SU-N**

Histone H1.2 (HIST1H1C) Rabbit Polyclonal Antibody

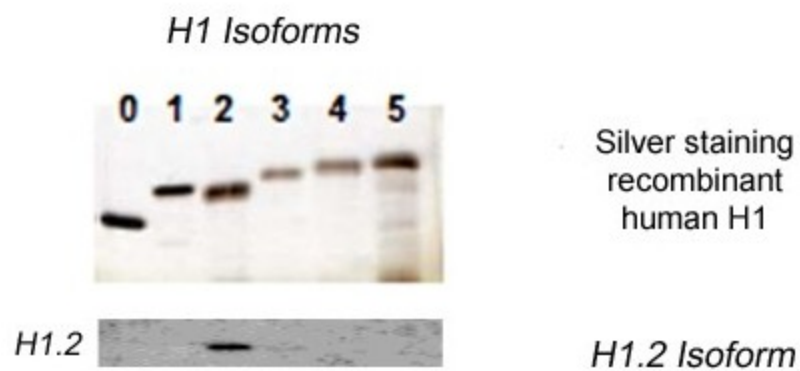
Product data:

Product Type:	Primary Antibodies
Applications:	ELISA, IHC, WB
Recommended Dilution:	Immunohistochemistry on paraffin sections: 1/200. ELISA. Western Blot: 1/1000.
Reactivity:	Human
Host:	Rabbit
Clonality:	Polyclonal
Immunogen:	Synthetic peptide derived from N-term domain of human histone H1.2
Specificity:	This antibody reacts with H1.2.
Formulation:	State: Serum State: Lyophilized serum
Reconstitution Method:	Restore in distilled water.
Conjugation:	Unconjugated
Storage:	Prior to reconstitution store at -20°C. Following reconstitution store undiluted at 2-8°C for one month or (in aliquots) at -20°C for longer. Avoid repeated freezing and thawing.
Stability:	Shelf life: one year from despatch.
Gene Name:	histone cluster 1, H1c
Database Link:	Entrez Gene 3006 Human P16403
Synonyms:	HIST1H1C, H1F2



[View online »](#)

Product images:



Western Blot of Histone H1.2 antibody using AP54998SU-N at 1/2000 dilution.