

## Product datasheet for **AP54990SU-N**

### **HSP70-1A (HSPA1A) Rabbit Polyclonal Antibody**

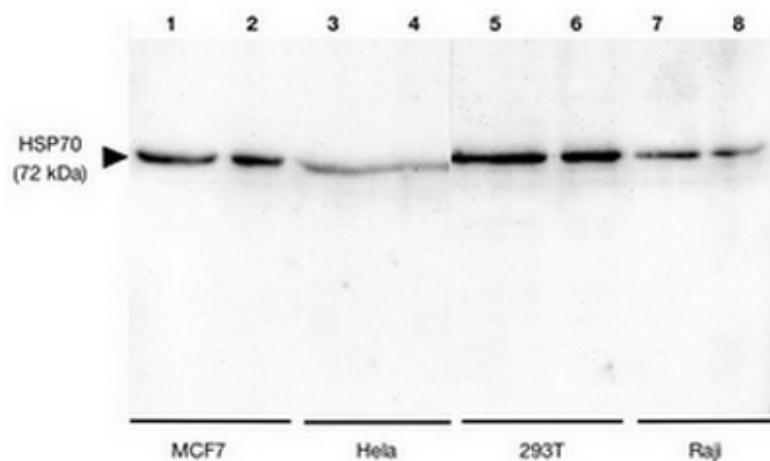
#### **Product data:**

Product Type:	Primary Antibodies
Applications:	ELISA, IHC, WB
Recommended Dilution:	<b>Immunohistochemistry:</b> 1/200 - 1/1000. <b>ELISA.</b> <b>Western Blot:</b> 1/500 - 1/5000.
Reactivity:	Human
Host:	Rabbit
Clonality:	Polyclonal
Immunogen:	Synthetic peptide derived from an internal domain of human HSP70
Specificity:	This antibody reacts with 70 kDa HSP70 protein.
Formulation:	State: Serum State: Lyophilized serum
Reconstitution Method:	Restore in distilled water.
Conjugation:	Unconjugated
Storage:	Prior to reconstitution store at -20°C. Following reconstitution store undiluted at 2-8°C for one month or (in aliquots) at -20°C for longer. Avoid repeated freezing and thawing.
Stability:	Shelf life: one year from despatch.
Gene Name:	heat shock protein family A (Hsp70) member 1A
Database Link:	<a href="#">Entrez Gene 3303 Human</a> <a href="#">P0DMV8</a>
Synonyms:	HSP70.1, HSP70-1/HSP70-2, HSPA1A, HSPA1B, HSPA1



[View online »](#)

## Product images:



Western Blot analysis of cells extracts using HSP70 antibody 20 and 10 ug of whole cell extracts were respectively used: MCF7 (lane 1, 2), HeLa (lane 3, 4), 293T (lane 5, 6) and Raji cells (lane 7, 8)