

Product datasheet for **AP54982SU-N**

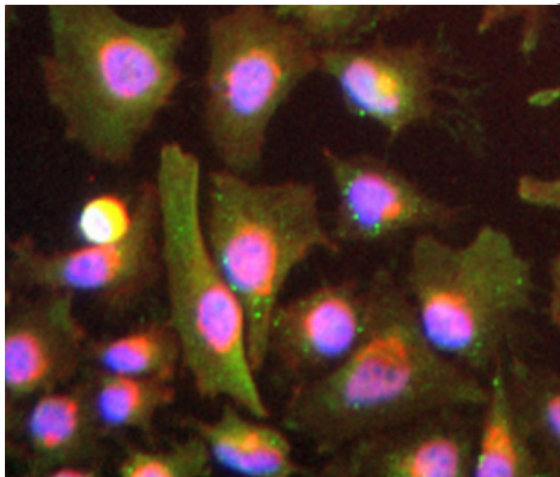
GPC1 Rabbit Polyclonal Antibody

Product data:

Product Type:	Primary Antibodies
Applications:	ELISA, IHC, WB
Recommended Dilution:	ELISA. Western Blot: 1/500-1/2000. Immunohistochemistry: 1/50-1/500.
Reactivity:	Human
Host:	Rabbit
Clonality:	Polyclonal
Immunogen:	Synthetic peptide derived from N-term domain of human GPC1
Specificity:	This antibody reacts with 61 kDa GPC1 protein.
Formulation:	State: Serum State: Lyophilized serum Preservative: None
Reconstitution Method:	Restore in distilled water.
Conjugation:	Unconjugated
Storage:	Store lyophilized at 2-8°C for 6 months or at -20°C long term. After reconstitution store the antibody undiluted at 2-8°C for one month or (in aliquots) at -20°C long term. Avoid repeated freezing and thawing.
Stability:	Shelf life: one year from despatch.
Gene Name:	glypican 1
Database Link:	Entrez Gene 2817 Human P35052
Synonyms:	FLJ38078; glypican



[View online »](#)

Product images:

Anti-Glypican-1 antibody ICC staining of HeLa cells (green). Plasma membranes are labelled in red and nuclei in blue.