

## Product datasheet for **AP54973SU-N**

### Glucose 6 phosphate isomerase (GPI) Rabbit Polyclonal Antibody

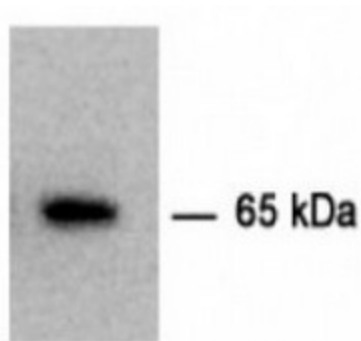
#### Product data:

Product Type:	Primary Antibodies
Applications:	ELISA, IHC, WB
Recommended Dilution:	<b>Immunohistochemistry:</b> 1/200 - 1/1000. <b>ELISA.</b> <b>Western Blot:</b> 1/500 - 1/5000.
Reactivity:	Human
Host:	Rabbit
Clonality:	Polyclonal
Immunogen:	Synthetic peptide derived from an internal domain of GPI
Specificity:	This antibody reacts with 65 kDa NLK protein.
Formulation:	State: Serum State: Lyophilized serum
Reconstitution Method:	Restore in distilled water.
Conjugation:	Unconjugated
Storage:	Prior to reconstitution store at -20°C. Following reconstitution store undiluted at 2-8°C for one month or (in aliquots) at -20°C for longer. Avoid repeated freezing and thawing.
Stability:	Shelf life: one year from despatch.
Gene Name:	glucose-6-phosphate isomerase
Database Link:	<u><a href="#">Entrez Gene 2821 Human P06744</a></u>
Synonyms:	Phosphoglucose isomerase, PGI, Phosphohexose isomerase, PHI, Neuroleukin, NLK

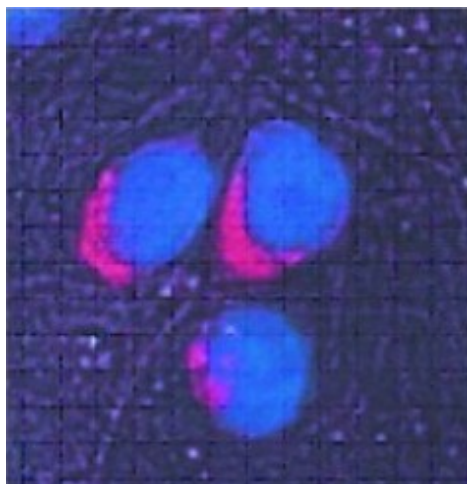


[View online »](#)

## Product images:



Immunodetection of Neuroleukin (NLK) in cerebrospinal fluid using this antibody



Immunohistochemical staining of rat neurons with this antibody