

Product datasheet for **AP54954SU-N**

Slc6a1 Rabbit Polyclonal Antibody

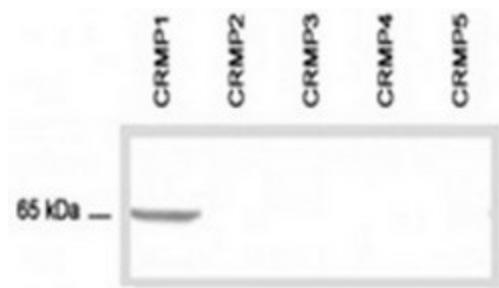
Product data:

Product Type:	Primary Antibodies
Applications:	ELISA, IHC, WB
Recommended Dilution:	ELISA. Immunohistochemistry: 1/50 - 1/500. Western Blot: 1/200 - 1/5000.
Reactivity:	Rat
Host:	Rabbit
Clonality:	Polyclonal
Immunogen:	Synthetic peptide derived from C-term domain of the rat GABA transporter-1 protein.
Specificity:	This antibody reacts with 72 kDa GABA transporter-1.
Formulation:	State: Serum State: Lyophilized Serum Preservative: None
Reconstitution Method:	Restore in distilled water.
Conjugation:	Unconjugated
Storage:	Prior to reconstitution store at -20°C. Following reconstitution store undiluted at 2-8°C for one month or (in aliquots) at -20°C for longer. Avoid repeated freezing and thawing.
Stability:	Shelf life: one year from despatch.
Gene Name:	solute carrier family 6 member 1
Database Link:	Entrez Gene 79212 Rat P23978
Synonyms:	GABATR, GABT1, GAT-1, GABA transporter 1

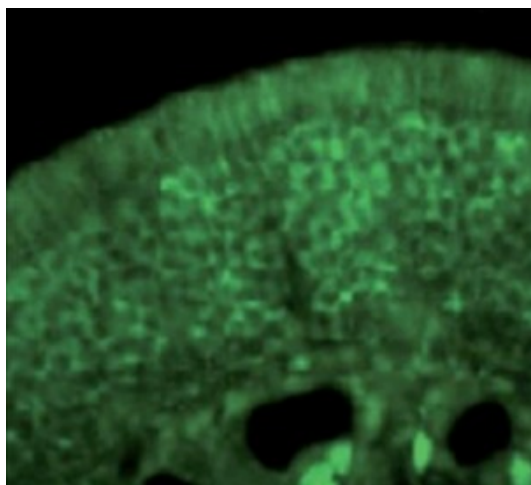


[View online »](#)

Product images:



Cell lysate from E.coli



Olfactory receptor neurons stained in immunohistochemistry with CRMP1 antibody.