

## Product datasheet for **AP54926SU-N**

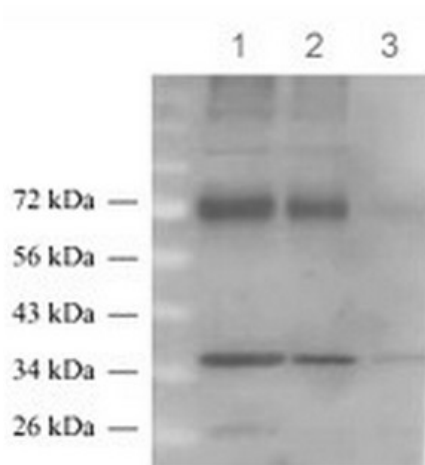
### Slc1a2 Rabbit Polyclonal Antibody

#### Product data:

Product Type:	Primary Antibodies
Applications:	ELISA, IHC, WB
Recommended Dilution:	<b>ELISA.</b> <b>Flow Cytometry:</b> 1/10 - 1/200. <b>Immunohistochemistry on frozen sections:</b> 1/50 - 1/500. <b>Western Blot:</b> 1/200 - 1/5000.
Reactivity:	Rat
Host:	Rabbit
Clonality:	Polyclonal
Immunogen:	A 16 residue synthetic peptide derived from C-terminal domain of rat GLT-1
Specificity:	This antibody reacts with GLT-1 in central nervous system. Cross react with Human and Mouse due to 100% peptide homology
Formulation:	State: Serum State: Lyophilized Serum Preservative: None
Reconstitution Method:	Restore in distilled water.
Conjugation:	Unconjugated
Storage:	Prior to reconstitution store at -20°C. Following reconstitution store undiluted at 2-8°C for one month or (in aliquots) at -20°C for longer. Avoid repeated freezing and thawing.
Stability:	Shelf life: one year from despatch.
Gene Name:	solute carrier family 1 (glial high affinity glutamate transporter), member 2
Database Link:	<a href="#">Entrez Gene 29482 Rat</a> <a href="#">P31596</a>
Synonyms:	GLT1



[View online »](#)

**Product images:**

Immunoreactivity of this antibody on protein extract from rat (Lane 1) and mouse brain (Lane 2). GLT1 protein is detected at 35 kDa and 70 kDa as dimer. In lane 3, inhibition of the immunoreactivity of the Ab with blocking peptide (1/1000 dilution)