

Product datasheet for **AP54925SU-N**

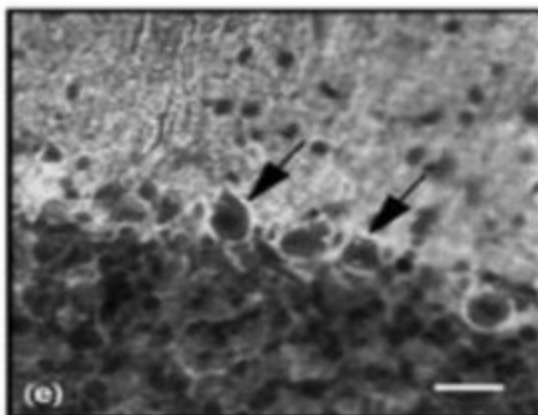
Slc1a3 Rabbit Polyclonal Antibody

Product data:

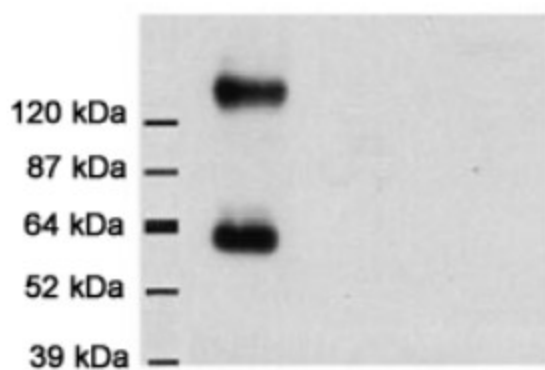
Product Type:	Primary Antibodies
Applications:	ELISA, FC, IF, IHC, WB
Recommended Dilution:	Flow Cytometry: 1/10-1/200. Immunohistochemistry on Frozen Sections: 1/50-1/500. Western Blot: 1/200-1/5000. ELISA. Immunocytochemistry.
Reactivity:	Rat
Host:	Rabbit
Clonality:	Polyclonal
Immunogen:	A 20 residue synthetic peptide derived from C-terminal domain of ratGLAST-1
Specificity:	This antibody reacts with Rat 60 kDa EAAT1 protein. May cross react with Mouse and Human protein due to sequence homology.
Formulation:	State: Serum State: Lyophilized Serum Preservative: None
Reconstitution Method:	Restore in distilled water.
Conjugation:	Unconjugated
Storage:	Store lyophilized at 2-8°C for 6 months or at -20°C long term. After reconstitution store the antibody undiluted at 2-8°C for one month or (in aliquots) at -20°C long term. Avoid repeated freezing and thawing.
Stability:	Shelf life: one year from despatch.
Gene Name:	solute carrier family 1 member 3
Database Link:	Entrez Gene 29483 Rat P24942
Synonyms:	GLAST, GLAST1, GLAST-1



[View online »](#)

Product images:

Frontal slices of rat brain cortex and rat brain cerebellum, respectively immunolabelled with anti-GLAST antibody, show a specific astrocytic labelling. Arrows show Glast-immunoreactivity on Bergmann glia (e, scale bar = 30 μ m).



Western Blot staining of homogenate from Rat brain cortex. A band of 60kDa for Glast-1 was detected and a second band of 150 kDa thought to correspond to protein dimer was also detected.