

Product datasheet for **AP54909SU-N**

mib1 Rabbit Polyclonal Antibody

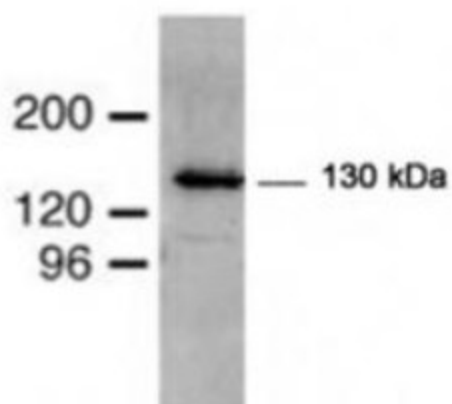
Product data:

Product Type:	Primary Antibodies
Applications:	ELISA, IHC, WB
Recommended Dilution:	ELISA. Immunohistochemistry: 1/50-1/500. Western Blot: 1/500-1/2000.
Reactivity:	Drosophila
Host:	Rabbit
Clonality:	Polyclonal
Immunogen:	Synthetic peptide derived from Nter domain of Drosophila melanogaster (Fruit fly) MIB
Specificity:	This antibody reacts with Drosophila melanogaster 130 kDa Mib1 protein.
Formulation:	State: Serum State: Lyophilized Serum Preservative: None
Reconstitution Method:	Restore in distilled water.
Conjugation:	Unconjugated
Storage:	Store lyophilized at 2-8°C for 6 months or at -20°C long term. After reconstitution store the antibody undiluted at 2-8°C for one month or (in aliquots) at -20°C long term. Avoid repeated freezing and thawing.
Stability:	Shelf life: one year from despatch.
Database Link:	Q9VUX2



[View online »](#)

Product images:



Western Blot analysis of endogenous D-mib protein in S2 cells using AP54909SU-N (Predicted Size: 130 kDa).