

Product datasheet for **AP54860PU-N**

CRMP4 (DPYSL3) Rabbit Polyclonal Antibody

Product data:

Product Type:	Primary Antibodies
Applications:	ELISA, IHC, WB
Recommended Dilution:	ELISA. Western Blot: 1/2000. Immunohistochemistry: 1/500.
Reactivity:	Human
Host:	Rabbit
Clonality:	Polyclonal
Immunogen:	A 15 residue synthetic peptide derived from C-terminal domain of Human Collapsing-Response Mediator.
Specificity:	Reacts with 65 kDa CRMP-4. This antibody does not react with CRMP-1, CRMP-2, CRMP-3 or CRMP-5.
Formulation:	0.1M Tris, 0.1M Glycine, 2% Sucrose State: Purified State: Lyophilized purified antibody Preservative: None
Reconstitution Method:	Restore in distilled water.
Concentration:	lot specific
Purification:	Affinity Chromatography on Protein A
Conjugation:	Unconjugated
Storage:	Store lyophilized at 2-8°C for 6 months or at -20°C long term. After reconstitution store the antibody undiluted at 2-8°C for one month or (in aliquots) at -20°C long term. Avoid repeated freezing and thawing.
Stability:	Shelf life: one year from despatch.
Gene Name:	dihydropyrimidinase like 3
Database Link:	Entrez Gene 1809 Human Q14195



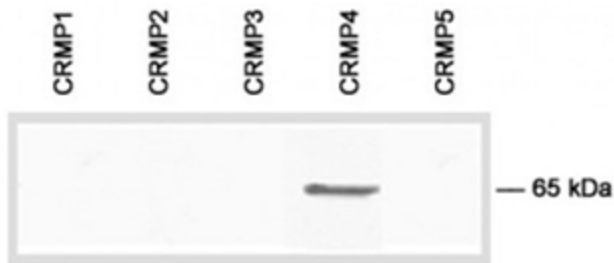
[View online »](#)

Background:

The collapsin response mediator protein (CRMP) family of five cytosolic phosphoproteins are highly expressed throughout brain development. The functions of CRMPs encompass signal transduction in developmental guidance cues as well as multiple cellular and molecular events involved in apoptosis/proliferation, cell migration, and differentiation. In the adult brain, the expression of CRMPs is dramatically downregulated. However, CRMPs remain expressed in structures that retain their capacity for differentiation and plasticity. The expression of CRMPs is altered in neurodegenerative diseases, and these proteins may have a role in the physiopathology of the adult nervous system.

Synonyms:

CRMP-4, DRP3, DRP-3, ULIP, ULIP1, ULIP-1, TUC-4

Product images:

Immunoblot analysis of the specificity of CRMP4 antibody Cat.-No AP54860PU-N using E.coli lysate transformed with cDNA of Human CRMP4