

## Product datasheet for **AP54859SU-N**

### CRMP3 (DPYSL4) Rabbit Polyclonal Antibody

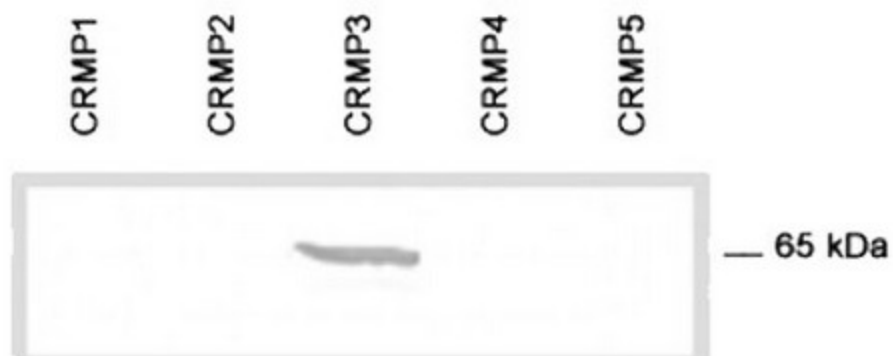
#### Product data:

Product Type:	Primary Antibodies
Applications:	ELISA, IHC, WB
Recommended Dilution:	<b>Immunohistochemistry:</b> 1/500. <b>ELISA.</b> <b>Western Blot:</b> 1/2000.
Reactivity:	Human
Host:	Rabbit
Clonality:	Polyclonal
Immunogen:	A 15 residue synthetic peptide derived from C-terminal domain of human collapsing-response mediator
Specificity:	This antibody reacts with 65 kDa CRMP-3. Do not react with CRMP-1, CRMP-2, CRMP-4 or CRMP-5.
Formulation:	State: Serum State: Lyophilized serum Preservative: None
Reconstitution Method:	Restore in distilled water.
Conjugation:	Unconjugated
Storage:	Store lyophilized at 2-8°C for 6 months or at -20°C long term. After reconstitution store the antibody undiluted at 2-8°C for one month or (in aliquots) at -20°C long term. Avoid repeated freezing and thawing.
Stability:	Shelf life: one year from despatch.
Gene Name:	dihydropyrimidinase like 4
Database Link:	<a href="#">Entrez Gene 10570 Human O14531</a>
Synonyms:	DRP-4, UNC33-like phosphoprotein 4, ULIP4



[View online »](#)

## Product images:



Immunoblot analysis of the specificity of polyclonal antibody to CRMP3 using E.coli transformed with cDNA of human CRMP3.