

## Product datasheet for **AP54858SU-N**

### Dpysl2 Rabbit Polyclonal Antibody

#### Product data:

Product Type:	Primary Antibodies
Applications:	ELISA, IF, IHC, WB
Recommended Dilution:	<b>ELISA.</b> <b>Western Blot:</b> 1/2000. <b>Immunohistochemistry:</b> 1/500.
Reactivity:	Mouse
Host:	Rabbit
Clonality:	Polyclonal
Immunogen:	A 15 residue synthetic peptide derived from C-terminal domain of Human Collapsing-Response Mediator.
Specificity:	This antibody reacts with 65 kDa CRMP-2. It do not react with CRMP-1, CRMP-3, CRMP-4 or CRMP-5.
Formulation:	State: Serum State: Lyophilized serum Preservative: None
Reconstitution Method:	Restore in distilled water.
Conjugation:	Unconjugated
Storage:	Store lyophilized at 2-8°C for 6 months or at -20°C long term. After reconstitution store the antibody undiluted at 2-8°C for one month or (in aliquots) at -20°C long term. Avoid repeated freezing and thawing.
Stability:	Shelf life: one year from despatch.
Gene Name:	dihydropyrimidinase-like 2
Database Link:	<a href="#">Entrez Gene 12934 Mouse O08553</a>



[View online »](#)

**Background:**

CRMP2 is 62 kDa member of the dehydroypyrimidinase family. It is involved in axon formation and outgrowth by transporting to axons, the actin cytoskeleton regulating; Rac1-associated protein 1 (Sra-1)/WASP family verprolin-homologous protein 1 (WAVE1) complex. CRMP2 also regulates axon formation and branching by binding tubulin heterodimers thereby enhancing microtubule polymerisation. Through its interaction with ROKalpha, CRMP2 is also thought to play a role in RhoA-dependent signalling. CRMP2 is associated with mesial temporal lobe epilepsy and schizophrenia.

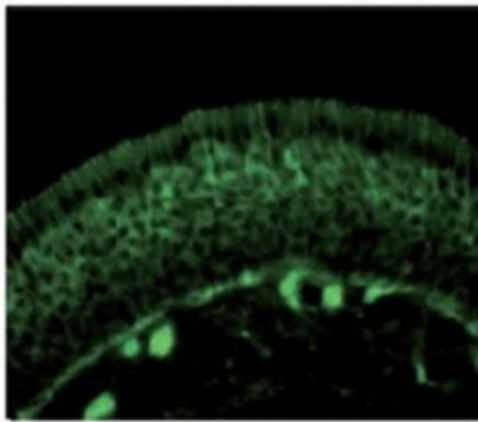
**Synonyms:**

Dihydropyrimidinase-related protein 2, DRP-2, N2A3

**Product images:**



Immunoblot analysis of the specificity of CRMP2 antibody Cat.-No AP54858SU-N using E.coli lysate transformed with cDNA of Human CRMP2



Distribution pattern of CRMP2 in olfactory receptor neurons within the olfactory mucosa