

Product datasheet for **AP54857SU-N**

Crmp1 Rabbit Polyclonal Antibody

Product data:

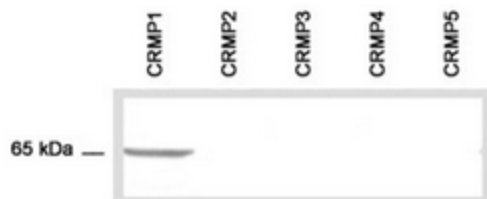
| | |
|------------------------|--|
| Product Type: | Primary Antibodies |
| Applications: | ELISA, IF, IHC, WB |
| Recommended Dilution: | ELISA. Western Blot: 1/2000. Immunohistochemistry: 1/500. |
| Reactivity: | Mouse |
| Host: | Rabbit |
| Clonality: | Polyclonal |
| Immunogen: | A 15 residue synthetic peptide derived from C-terminal domain of Human collapsing-response mediator |
| Specificity: | This antibody reacts with 65 kDa CRMP-1. It do not cross react with CRMP-2, CRMP-3, CRMP-4 or CRMP-5. |
| Formulation: | State: Serum State: Lyophilized serum Preservative: None |
| Reconstitution Method: | Restore in distilled water. |
| Conjugation: | Unconjugated |
| Storage: | Store lyophilized at 2-8°C for 6 months or at -20°C long term. After reconstitution store the antibody undiluted at 2-8°C for one month or (in aliquots) at -20°C long term. Avoid repeated freezing and thawing. |
| Stability: | Shelf life: one year from despatch. |
| Gene Name: | collapsin response mediator protein 1 |
| Database Link: | Entrez Gene 12933 Mouse P97427 |
| Background: | CRMP1 is a member of a family of cytosolic phosphoproteins expressed exclusively in the nervous system. The encoded protein is thought to be a part of the semaphorin signal transduction pathway implicated in semaphorin-induced growth cone collapse during neural development. Alternative splicing results in multiple transcript variants. |



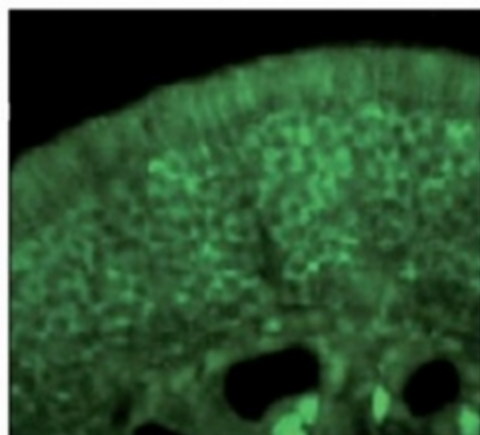
[View online »](#)

Synonyms: Dihydropyrimidinase-related protein 1, DRP-1, Unc-33-like phosphoprotein 3, ULIP3

Product images:



Immunoblot analysis of the specificity of CRMP1 Cat.-No AP54857SU-N using E.coli lysate transformed with cDNA of Human CRMP1



Distribution pattern of CRMP1 in olfactory receptor neurons within the olfactory mucosa