

## Product datasheet for **AP54851SU-N**

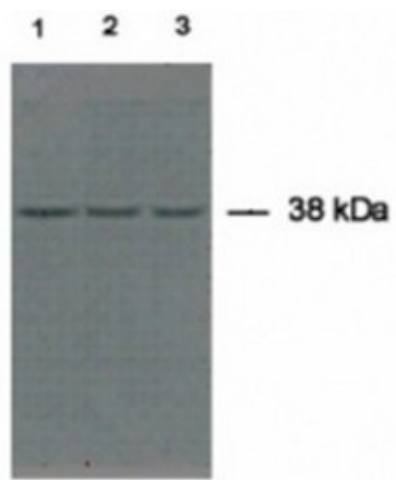
### CCDC50 Rabbit Polyclonal Antibody

#### Product data:

Product Type:	Primary Antibodies
Applications:	ELISA, IHC, WB
Recommended Dilution:	<b>Immunohistochemistry:</b> 1/50 - 1/500. <b>ELISA.</b> <b>Western Blot:</b> 1/200 - 1/2000.
Reactivity:	Human
Host:	Rabbit
Clonality:	Polyclonal
Immunogen:	Synthetic peptide derived from C-term domain of human CCD50
Specificity:	This antibody reacts with 36 kDa CCD50 protein.
Formulation:	State: Serum State: Lyophilized serum
Reconstitution Method:	Restore in distilled water.
Conjugation:	Unconjugated
Storage:	Prior to reconstitution store at -20°C. Following reconstitution store undiluted at 2-8°C for one month or (in aliquots) at -20°C for longer. Avoid repeated freezing and thawing.
Stability:	Shelf life: one year from despatch.
Gene Name:	coiled-coil domain containing 50
Database Link:	<a href="#">Entrez Gene 152137 Human</a> <a href="#">Q8IVM0</a>
Synonyms:	CCDC50, C3orf6



[View online »](#)

**Product images:**

Western blot of tissue samples from the GER (Lane 1), stria vascularis (Lane 2) and modiulus (Lane 3) of the mouse cochlea using AP54851SU-N