

Product datasheet for **AP54847SU-N**

Citrulline Rabbit Polyclonal Antibody

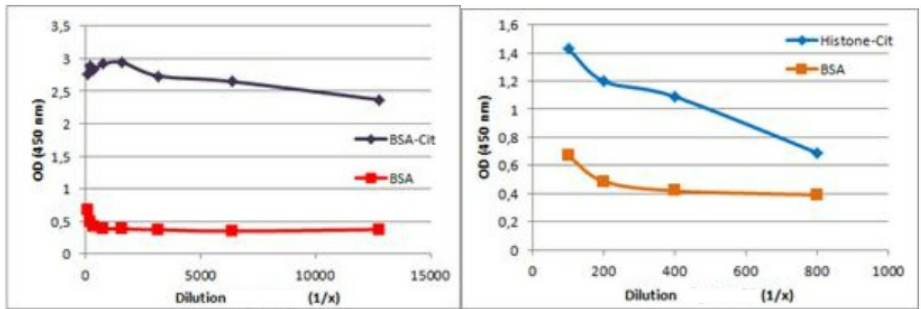
Product data:

Product Type:	Primary Antibodies
Applications:	ELISA, IF, WB
Recommended Dilution:	ELISA. Western Blot. Immunocytochemistry.
Host:	Rabbit
Clonality:	Polyclonal
Immunogen:	Citrulline coupled to KLH via Glutaraldehyde
Specificity:	This antibody reacts with intrapeptidic Citrulline independantly of AA sequence. Does not react with <i>free</i> Citrulline, Ornithine or Arginine.
Formulation:	State: Serum State: Lyophilized serum Preservative: None
Reconstitution Method:	Restore in 200 µl distilled water.
Conjugation:	Unconjugated
Storage:	Store lyophilized at 2-8°C for 6 months or at -20°C long term. After reconstitution store the antibody undiluted at 2-8°C for one month or (in aliquots) at -20°C long term. Avoid repeated freezing and thawing.
Stability:	Shelf life: one year from despatch.
Background:	The amino acid Citrulline is required to detoxify the liver from ammonia, which is a waste product of the body from oxidation. Citrulline promotes energy and assists with the immune system. This unusual amino acid is formed in the urea cycle by the addition of carbon dioxide and ammonia to ornithine. It is then combined with aspartic acid to form arginosuccinic acid, which later is metabolized into the amino acid Arginine.



[View online »](#)

Product images:



ELISA using Citrulline Antibody Cat.-No AP54847SU-N (Dilution of 1/x): In the first Figure you can see the high immuno-reactivity of the antibody against Citrulline due to the high amounts of Citrulline conjugated to BSA. The second Figure demonstrate the s