

Product datasheet for **AP54838PU-N**

VAMP3 Rabbit Polyclonal Antibody

Product data:

Product Type:	Primary Antibodies
Applications:	ELISA, IF, IHC, WB
Recommended Dilution:	ELISA. Western Blot: 1/250-1/1000. Immunofluorescence: 1/50-1/500.
Reactivity:	Human
Host:	Rabbit
Clonality:	Polyclonal
Immunogen:	Synthetic peptide derived from N-terminal domain of the Human Cellubrevin protein.
Specificity:	This antibody reacts with Human 10 kDa VAMP-3 of CaCo-2 cell extract. No cross reactivity with Cellubrevin from other species (Canine, Rat).
Formulation:	0.1M Tris, 0.1M Glycine and 2% Sucrose State: Purified State: Lyophilized purified powder Preservative: None
Reconstitution Method:	Restore in distilled water.
Purification:	Affinity Chromatography on Protein A
Conjugation:	Unconjugated
Storage:	Prior to reconstitution store the antibody at -20°C. Store reconstituted antibody at 2-8°C for one month or (in aliquots) at -20°C for longer Avoid repeated freezing and thawing.
Stability:	Shelf life: one year from despatch.
Gene Name:	vesicle associated membrane protein 3
Database Link:	Entrez Gene 9341 Human Q15836



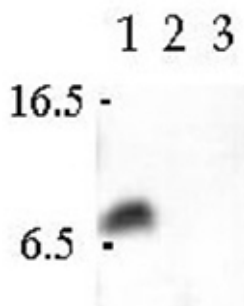
[View online »](#)

Background:

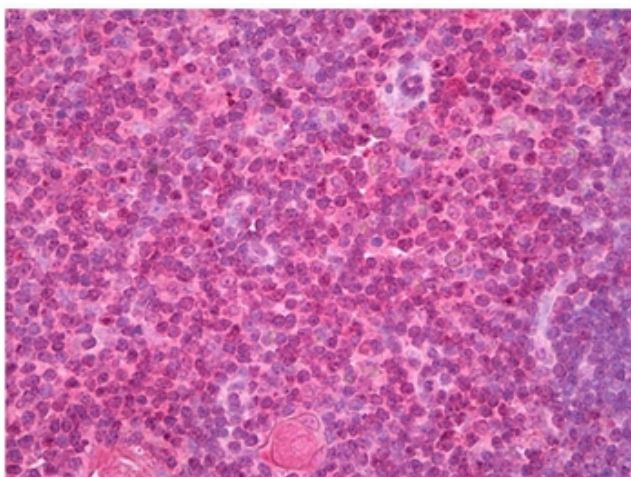
Cellubrevin, also known as VAMP3, is a member of the Vamp/synaptobrevin family. Vamps, syntaxins, and the 25-kD synaptosomal-associated protein are the main components of a protein complex involved in the docking and/or fusion of synaptic vesicles with the presynaptic membrane. Cellubrevin is a vesicular soluble N-ethylmaleimide sensitive factor attachment protein receptor (v-SNARE) homologous to the neuronal synaptobrevins 1/2 and is also a substrate of tetanus neurotoxin.

Synonyms:

VAMP3, Vesicle-associated membrane protein 3, SYB3, Cellubrevin, CEB

Product images:

Western Blot analysis using Cellubrevin antibody in Human CaCo-2 cell extract (Lane 1), Canine MDCK cell extract (Lane 2) and Rat PC12 cell extract. Ref: Galli et al., Mol. Biol. Cell 1998



Thymus stained with Cellubrevin antibody in Immunohistochemistry on Paraffin Sections.