

## Product datasheet for **AP54837SU-N**

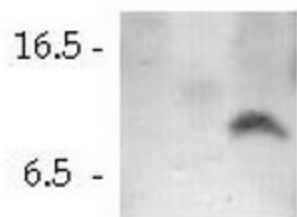
### Vamp3 Rabbit Polyclonal Antibody

#### Product data:

Product Type:	Primary Antibodies
Applications:	ELISA, IF, WB
Recommended Dilution:	<b>Immunofluorescence:</b> 1/50. <b>ELISA.</b> <b>Western Blot:</b> 1/250 - 1/1000.
Reactivity:	Rat
Host:	Rabbit
Clonality:	Polyclonal
Immunogen:	A 15 residue synthetic peptide derived from N-terminal domain of rat cellubrevin (MW : 10 kDa)
Specificity:	This antibody reacts with 10 kDa VAMP-3 from PC12 cell extract.
Formulation:	State: Serum State: Lyophilized serum Preservative: None
Reconstitution Method:	Restore in distilled water.
Conjugation:	Unconjugated
Storage:	Prior to reconstitution store at -20°C. Following reconstitution store undiluted at 2-8°C for one month or (in aliquots) at -20°C for longer. Avoid repeated freezing and thawing.
Stability:	Shelf life: one year from despatch.
Gene Name:	vesicle-associated membrane protein 3
Database Link:	<a href="#">Entrez Gene 29528 Rat P63025</a>
Synonyms:	VAMP3, Vesicle-associated membrane protein 3, SYB3, Cellubrevin, CEB



[View online »](#)

**Product images:**

1 : CaCo-2 (human) cell extract  
2 : MDCK (canine) cell extract  
3 : PC12 (rat) cell extract

Ref: Galli *et al.*, *J. Cell Biol.* 1994