

## Product datasheet for **AP54830SU-N**

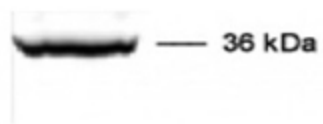
### **cpl-1 (Pro-region) Rabbit Polyclonal Antibody**

#### **Product data:**

Product Type:	Primary Antibodies
Applications:	WB
Recommended Dilution:	<b>Western Blot:</b> 1/200-1/1000. <b>Electron Microscopy:</b> 1/50-1/200.
Reactivity:	<i>C. elegans</i>
Host:	Rabbit
Clonality:	Polyclonal
Immunogen:	Synthetic peptide derived from Pro-region of CPL-1
Specificity:	Reacts with 36 kDa wild-type protein of <i>C.elegans</i> .
Formulation:	State: Serum State: Lyophilized serum Preservative: None
Reconstitution Method:	Restore in distilled water.
Conjugation:	Unconjugated
Storage:	Prior to reconstitution store the antibody at -20°C. Store reconstituted antibody at 2-8°C for one month or (in aliquots) at -20°C for longer. Avoid repeated freezing and thawing.
Stability:	Shelf life: one year from despatch.
Database Link:	<a href="#">O45734</a>
Background:	Cathepsin L protease (CPL-1) is involved in the degradation of intracellular and extracellular proteins and is essential for yolk processing during embryogenesis in <i>Caenorhabditis elegans</i> .
Synonyms:	T03E6.7, Cathepsin L protease



[View online »](#)

**Product images:**

Western Blot of *Caenorhabditis elegans* adult worm extracts using CPL-1 antibody. The band shows the wild-type Cathepsin L-protease (~ 36 kDa)