

Product datasheet for **AP54829PU-N**

cpl-1 (Mature-region) Rabbit Polyclonal Antibody

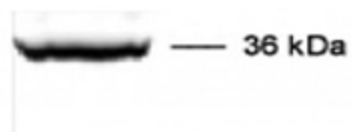
Product data:

Product Type:	Primary Antibodies
Applications:	WB
Recommended Dilution:	Western Blot: 1/200-1/1000. Electron Microscopy: 1/50-1/200.
Reactivity:	C. elegans
Host:	Rabbit
Clonality:	Polyclonal
Immunogen:	Synthetic peptide derived from Mature-region of CPL-1
Specificity:	Reacts with 36 kDa CPL-1 wild-type protein of <i>C.elegans</i> .
Formulation:	0.1M Tris, 0.1M Glycine and 2% Sucrose State: Purified State: Lyophilized purified antibody Preservative: None
Reconstitution Method:	Restore in distilled water.
Purification:	Affinity Chromatography on Protein A
Storage:	Store lyophilized at 2-8°C for 6 months or at -20°C long term. After reconstitution store the antibody undiluted at 2-8°C for one month or (in aliquots) at -20°C long term. Avoid repeated freezing and thawing.
Stability:	Shelf life: one year from despatch.
Background:	Cathepsin L protease (CPL-1) is involved in the degradation of intracellular and extracellular proteins and is essential for yolk processing during embryogenesis in <i>Caenorhabditis elegans</i> .
Synonyms:	T03E6.7, Cathepsin L protease



[View online »](#)

Product images:



Western Blot of *Caenorhabditis elegans* adult worm extracts. The band shows the wild-type Cathepsin L-protease (~ 36 kDa)