

## Product datasheet for **AP54828PU-N**

### Caspase 14 (CASP14) Rabbit Polyclonal Antibody

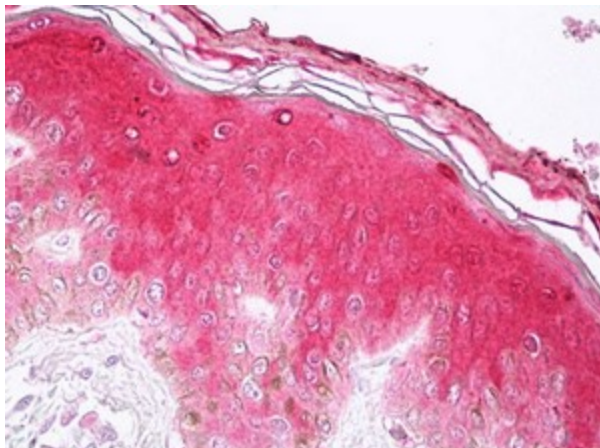
#### Product data:

Product Type:	Primary Antibodies
Applications:	ELISA, IHC, WB
Recommended Dilution:	<b>ELISA.</b> <b>Western Blot:</b> 1/500-1/5000. <b>Immunohistochemistry:</b> 1/100-1/500.
Reactivity:	Human
Host:	Rabbit
Clonality:	Polyclonal
Immunogen:	A 15 residue synthetic peptide derived from N-terminal domain of Caspase-14
Specificity:	This antibody reacts with Caspase-14 in cell extracts.
Formulation:	0.1M Tris, 0.1M Glycine, 2% Sucrose State: Purified State: Lyophilized purified powder Preservative: None
Reconstitution Method:	Restore in distilled water.
Concentration:	lot specific
Purification:	Purified A Chromatography
Conjugation:	Unconjugated
Storage:	Store lyophilized at 2-8°C for 6 months or at -20°C long term. After reconstitution store the antibody undiluted at 2-8°C for one month or (in aliquots) at -20°C long term. Avoid repeated freezing and thawing.
Stability:	Shelf life: one year from despatch.
Gene Name:	caspase 14
Database Link:	<a href="#">Entrez Gene 23581 Human P31944</a>
Synonyms:	CASP-14, CASP14



[View online »](#)

**Product images:**



Skin stained in IHC-P with Caspase-14 antibody