

Product datasheet for **AP54824PU-N**

COMP Rabbit Polyclonal Antibody

Product data:

Product Type:	Primary Antibodies
Applications:	ELISA, IHC, WB
Recommended Dilution:	ELISA. Western Blot: 1/200-1/1000. Immunohistochemistry: 1/200-1/1000.
Reactivity:	Human
Host:	Rabbit
Clonality:	Polyclonal
Immunogen:	A 16 residue synthetic peptide derived from specific domain of Complexed Oligomatrix Protein
Specificity:	Reacts with Human COMP from cartilage matrix.
Formulation:	0.1M Tris, 0.1M Glycine, 2% Sucrose State: Purified State: Lyophilized purified antibody Preservative: None
Reconstitution Method:	Restore in distilled water.
Concentration:	lot specific
Purification:	Affinity Chromatography on Protein A
Conjugation:	Unconjugated
Storage:	Store lyophilized at 2-8°C for 6 months or at -20°C long term. After reconstitution store the antibody undiluted at 2-8°C for one month or (in aliquots) at -20°C long term. Avoid repeated freezing and thawing.
Stability:	Shelf life: one year from despatch.
Gene Name:	cartilage oligomeric matrix protein
Database Link:	Entrez Gene 1311 Human P49747



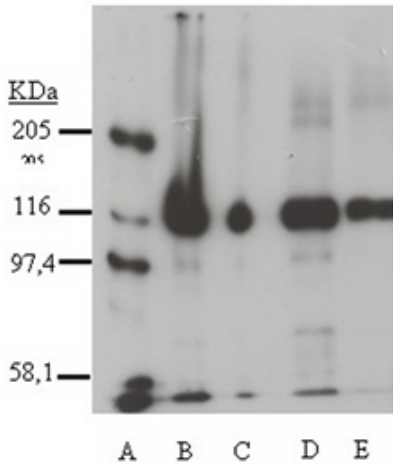
[View online »](#)

Background:

COMP is a noncollagenous extracellular matrix (ECM) protein. It consists of five identical glycoprotein subunits, each with EGF like and calcium binding (thrombospondin like) domains. Oligomerization results from formation of a five stranded coiled coil and disulfides. Binding to other ECM proteins such as collagen appears to depend on divalent cations. Mutations can cause the osteochondrodysplasias pseudoachondroplasia (PSACH) and multiple epiphyseal dysplasia (MED).

Synonyms:

Cartilage oligomeric matrix protein

Product images:


A: molecular weight standard
 B: extract from bovin cartilage
 C: extract from human cartilage
 D: extract from rabbit cartilage
 E: human purified COMP

Western Blot analysis using COMP antibody