

## Product datasheet for **AP54810SU-N**

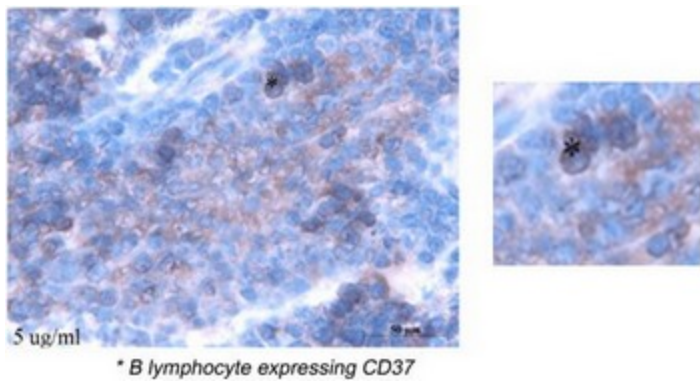
### Cd37 Rabbit Polyclonal Antibody

#### Product data:

Product Type:	Primary Antibodies
Applications:	ELISA, IF, IHC, WB
Recommended Dilution:	<b>ELISA.</b> <b>Western Blot:</b> 1/500-1/5000. <b>Immunofluorescence:</b> 1/100-1/500.
Reactivity:	Mouse
Host:	Rabbit
Clonality:	Polyclonal
Immunogen:	Synthetic peptides derived from internal part of the murine CD37 protein
Specificity:	This antibody reacts with 32 kDa CD37 protein.
Formulation:	State: Serum State: Lyophilized serum Preservative: None
Reconstitution Method:	Restore in distilled water.
Conjugation:	Unconjugated
Storage:	Prior to reconstitution store at -20°C. Following reconstitution store undiluted at 2-8°C for one month or (in aliquots) at -20°C for longer. Avoid repeated freezing and thawing.
Stability:	Shelf life: one year from despatch.
Gene Name:	CD37 antigen
Database Link:	<a href="#">Entrez Gene 12493 Mouse Q61470</a>
Synonyms:	TSPAN26, Tetraspanin-26



[View online »](#)

**Product images:**

CD37 staining in B lymphocytes from a murine spleen detected with AP54810SU-N