

Product datasheet for **AP54787PU-N**

Apelin (APLN) Rabbit Polyclonal Antibody

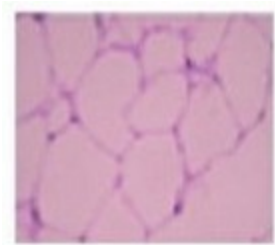
Product data:

Product Type:	Primary Antibodies
Applications:	ELISA, IHC, WB
Recommended Dilution:	ELISA. Western Blot: 1/500-1/2000. Immunohistochemistry: 1/100-1/500.
Reactivity:	Human
Host:	Rabbit
Clonality:	Polyclonal
Immunogen:	Synthetic peptide derived from C terminal region of Human Apelin
Specificity:	This antibody reacts with a Human 8.5 kDa APLN protein.
Formulation:	0.1M Tris, 0.1M Glycine, 2% Sucrose State: Purified State: Lyophilized purified powder Preservative: None
Reconstitution Method:	Restore in distilled water.
Purification:	Affinity Chromatography on Protein A
Conjugation:	Unconjugated
Storage:	Store lyophilized at 2-8°C for 6 months or at -20°C long term. After reconstitution store the antibody undiluted at 2-8°C for one month or (in aliquots) at -20°C long term. Avoid repeated freezing and thawing.
Stability:	Shelf life: one year from despatch.
Gene Name:	apelin
Database Link:	Entrez Gene 8862 Human Q9ULZ1
Synonyms:	APLN, APEL



[View online »](#)

Product images:



Immunohistochemical staining of human isolated adipocytes using AP54787PU-N at 1/200 dilution