

Product datasheet for **AP54742PU-N**

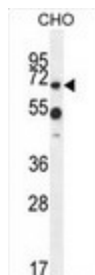
ZUP1 (N-term) Rabbit Polyclonal Antibody

Product data:

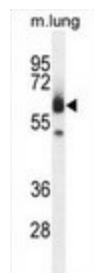
Product Type:	Primary Antibodies
Applications:	WB
Recommended Dilution:	ELISA: 1:1;000. Western blot: 1:100~500.
Reactivity:	Hamster, Human, Mouse
Host:	Rabbit
Isotype:	Ig
Clonality:	Polyclonal
Immunogen:	KLH conjugated synthetic peptide between 114-144 amino acids from the N-terminal region of human ZUFSP
Specificity:	This antibody detects ZUFSP / C6orf113 (N-term).
Formulation:	PBS with 0.09% (W/V) sodium azide State: Aff - Purified State: Liquid Ig fraction
Concentration:	lot specific
Purification:	Protein A column followed by peptide affinity purification
Conjugation:	Unconjugated
Storage:	Store at 2 - 8 °C for up to six months or (in aliquots) at -20 °C for longer. Avoid repeated freezing and thawing.
Stability:	Shelf life: one year from despatch.
Gene Name:	zinc finger with UFM1 specific peptidase domain
Database Link:	Entrez Gene 72580 Mouse Entrez Gene 221302 Human Q96AP4
Synonyms:	C6orf113; dj412I7.3
Note:	Molecular Weight: 65959 Da



[View online »](#)

Product images:

ZUFSP Antibody (N-term) western blot analysis in CHO cell line lysates (35 ug/lane). This demonstrates the ZUFSP antibody detected the ZUFSP protein (arrow).



ZUFSP Antibody (N-term) western blot analysis in mouse lung tissue lysates (35 ug/lane). This demonstrates the ZUFSP antibody detected the ZUFSP protein (arrow).