

Product datasheet for **AP54741PU-N**

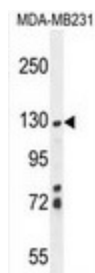
ZSWIM6 (C-term) Rabbit Polyclonal Antibody

Product data:

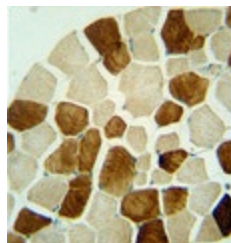
Product Type:	Primary Antibodies
Applications:	IHC, WB
Recommended Dilution:	ELISA: 1:1;000. Western blot: 1:100~500. Immunohistochemistry: 1:50~100.
Reactivity:	Human
Host:	Rabbit
Isotype:	Ig
Clonality:	Polyclonal
Immunogen:	KLH conjugated synthetic peptide between 1153-1183 amino acids from the C-terminal region of human ZSWIM6
Specificity:	This antibody detects ZSWIM6 (C-term).
Formulation:	PBS with 0.09% (W/V) sodium azide State: Aff - Purified State: Liquid Ig fraction
Concentration:	lot specific
Purification:	Protein A column followed by peptide affinity purification
Conjugation:	Unconjugated
Storage:	Store at 2 - 8 °C for up to six months or (in aliquots) at -20 °C for longer. Avoid repeated freezing and thawing.
Stability:	Shelf life: one year from despatch.
Gene Name:	zinc finger SWIM-type containing 6
Database Link:	Entrez Gene 57688 Human Q9HCJ5
Synonyms:	FOXD4L3,Forkhead box protein D4-like 3
Note:	Molecular Weight: 133 KD Da



[View online »](#)

Product images:

ZSWIM6 Antibody (C-term) western blot analysis in MDA-MB231 cell line lysates (35 ug/lane). This demonstrates the ZSWIM6 antibody detected the ZSWIM6 protein (arrow).



ZSWIM6 antibody (C-term) immunohistochemistry analysis in formalin fixed and paraffin embedded human skeletal muscle followed by peroxidase conjugation of the secondary antibody and DAB staining. This data demonstrates the use of the ZSWIM6 antibody (C-term) for immunohistochemistry. Clinical relevance has not been evaluated.