

Product datasheet for **AP54736PU-N**

ZNRF1 (Center) Rabbit Polyclonal Antibody

Product data:

Product Type:	Primary Antibodies
Applications:	WB
Recommended Dilution:	ELISA: 1:1;000. Western blot: 1:100~500.
Reactivity:	Human
Host:	Rabbit
Isotype:	Ig
Clonality:	Polyclonal
Immunogen:	KLH conjugated synthetic peptide between 58-86 amino acids from the Central region of human ZNRF1
Specificity:	This antibody detects ZNRF1 (Center).
Formulation:	PBS with 0.09% (W/V) sodium azide State: Aff - Purified State: Liquid Ig fraction
Concentration:	lot specific
Purification:	Protein A column followed by peptide affinity purification
Conjugation:	Unconjugated
Storage:	Store at 2 - 8 °C for up to six months or (in aliquots) at -20 °C for longer. Avoid repeated freezing and thawing.
Stability:	Shelf life: one year from despatch.
Gene Name:	zinc and ring finger 1, E3 ubiquitin protein ligase
Database Link:	Entrez Gene 84937 Human Q8ND25



[View online »](#)

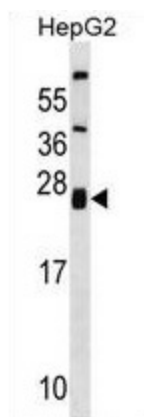
Background: In a study identifying genes in rat that are upregulated in response to nerve damage, a gene which is highly expressed in ganglia and in the central nervous system was found. The protein encoded by the rat gene contains both a zinc finger and a RING finger motif and is localized in the endosome/lysosome compartment, indicating that it may be involved in ubiquitin-mediated protein modification. The protein encoded by this human gene is highly similar in sequence to that encoded by the rat gene.

Synonyms: NIN283

Note: **Molecular Weight:** 23783 Da

Protein Families: Druggable Genome

Product images:



ZNRF1 Antibody (Center) western blot analysis in HepG2 cell line lysates (35 ug/lane). This demonstrates the ZNRF1 antibody detected the ZNRF1 protein (arrow).