

Product datasheet for **AP54726PU-N**

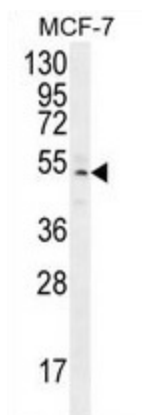
ZNF829 (Center) Rabbit Polyclonal Antibody

Product data:

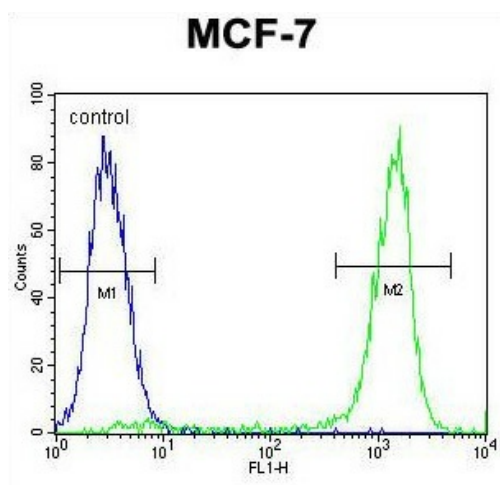
Product Type:	Primary Antibodies
Applications:	FC, WB
Recommended Dilution:	ELISA: 1:1;000. Western blot: 1:100~500. Flow cytometry 1:10~50.
Reactivity:	Human
Host:	Rabbit
Isotype:	Ig
Clonality:	Polyclonal
Immunogen:	KLH conjugated synthetic peptide between 134-163 amino acids from the Central region of human ZNF829
Specificity:	This antibody detects ZNF829 (Center).
Formulation:	PBS with 0.09% (W/V) sodium azide State: Aff - Purified State: Liquid Ig fraction
Concentration:	lot specific
Purification:	Protein A column followed by peptide affinity purification
Conjugation:	Unconjugated
Storage:	Store at 2 - 8 °C for up to six months or (in aliquots) at -20 °C for longer. Avoid repeated freezing and thawing.
Stability:	Shelf life: one year from despatch.
Gene Name:	zinc finger protein 829
Database Link:	Entrez Gene 374899 Human Q3KNS6
Background:	May be involved in transcriptional regulation.
Synonyms:	Zinc finger protein 829
Note:	Molecular Weight: 50142 Da



[View online »](#)

Product images:


ZNF829 Antibody (Center) western blot analysis in MCF-7 cell line lysates (35 ug/lane). This demonstrates the ZNF829 antibody detected the ZNF829 protein (arrow).



ZNF829 Antibody (Center) flow cytometric analysis of MCF-7 cells (right histogram) compared to a negative control cell (left histogram). FITC-conjugated goat-anti-rabbit secondary antibodies were used for the analysis.