

Product datasheet for **AP54715PU-N**

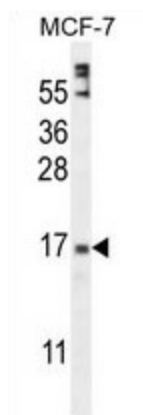
ZNF720 (Center) Rabbit Polyclonal Antibody

Product data:

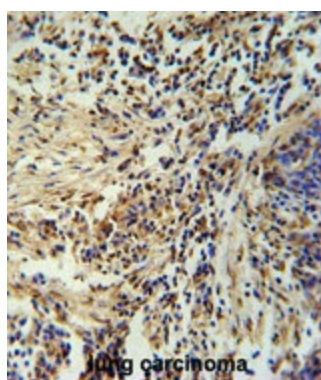
Product Type:	Primary Antibodies
Applications:	IHC, WB
Recommended Dilution:	ELISA: 1:1;000. Western blot: 1:100~500. Immunohistochemistry on paraffin sections: 1:50~100.
Reactivity:	Human
Host:	Rabbit
Isotype:	Ig
Clonality:	Polyclonal
Immunogen:	KLH conjugated synthetic peptide between 34-62 amino acids from the Central region of human ZNF720
Specificity:	This antibody detects ZNF720 (Center).
Formulation:	PBS with 0.09% (W/V) sodium azide State: Aff - Purified State: Liquid Ig fraction
Concentration:	lot specific
Purification:	Protein A column followed by peptide affinity purification
Conjugation:	Unconjugated
Storage:	Store at 2 - 8 °C for up to six months or (in aliquots) at -20 °C for longer. Avoid repeated freezing and thawing.
Stability:	Shelf life: one year from despatch.
Gene Name:	zinc finger protein 720
Database Link:	Entrez Gene 124411 Human Q7Z2F6
Synonyms:	MGC9313; MGC62019
Note:	Molecular Weight: 14454 Da
Protein Families:	Transcription Factors



[View online »](#)

Product images:

ZNF720 Antibody (Center) western blot analysis in MCF-7 cell line lysates (35 ug/lane). This demonstrates the ZNF720 antibody detected the ZNF720 protein (arrow).



ZNF720 Antibody (Center) immunohistochemistry analysis in formalin fixed and paraffin embedded human lung carcinoma followed by peroxidase conjugation of the secondary antibody and DAB staining. This data demonstrates the use of the ZNF720 Antibody (Center) for immunohistochemistry. Clinical relevance has not been evaluated.