

Product datasheet for **AP54709PU-N**

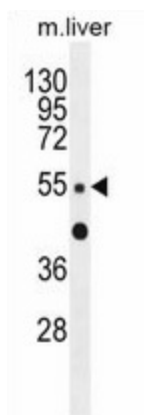
ZNF672 (C-term) Rabbit Polyclonal Antibody

Product data:

Product Type:	Primary Antibodies
Applications:	WB
Recommended Dilution:	ELISA: 1:1;000. Western blot: 1:100~500.
Reactivity:	Human, Mouse
Host:	Rabbit
Isotype:	Ig
Clonality:	Polyclonal
Immunogen:	KLH conjugated synthetic peptide between 347-377 amino acids from the C-terminal region of human ZNF672
Specificity:	This antibody detects ZNF672 (C-term).
Formulation:	PBS with 0.09% (W/V) sodium azide State: Aff - Purified State: Liquid Ig fraction
Concentration:	lot specific
Purification:	Protein A column followed by peptide affinity purification
Conjugation:	Unconjugated
Storage:	Store at 2 - 8 °C for up to six months or (in aliquots) at -20 °C for longer. Avoid repeated freezing and thawing.
Stability:	Shelf life: one year from despatch.
Gene Name:	zinc finger protein 672
Database Link:	Entrez Gene 79894 Human Q499Z4
Background:	ZNF672 may be involved in transcriptional regulation.
Synonyms:	Zinc finger protein 672
Note:	Molecular Weight: 50224 Da



[View online »](#)

Product images:

ZNF672 Antibody (C-term) western blot analysis in mouse liver tissue lysates (35 ug/lane). This demonstrates the ZNF672 antibody detected the ZNF672 protein (arrow).