

Product datasheet for **AP54707PU-N**

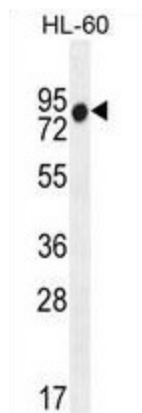
ZNF665 (N-term) Rabbit Polyclonal Antibody

Product data:

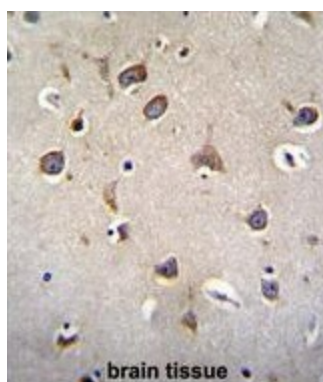
Product Type:	Primary Antibodies
Applications:	IHC, WB
Recommended Dilution:	ELISA: 1:1;000. Western blot: 1:100~500. Immunohistochemistry on paraffin sections.
Reactivity:	Human
Host:	Rabbit
Isotype:	Ig
Clonality:	Polyclonal
Immunogen:	KLH conjugated synthetic peptide between 77-107 amino acids from the N-terminal region of human ZNF665
Specificity:	This antibody detects ZNF665 (N-term).
Formulation:	PBS with 0.09% (W/V) sodium azide State: Aff - Purified State: Liquid Ig fraction
Concentration:	lot specific
Purification:	Protein A column followed by peptide affinity purification
Conjugation:	Unconjugated
Storage:	Store at 2 - 8 °C for up to six months or (in aliquots) at -20 °C for longer. Avoid repeated freezing and thawing.
Stability:	Shelf life: one year from despatch.
Gene Name:	zinc finger protein 665
Database Link:	Entrez Gene 79788 Human Q9H7R5
Background:	ZNF665 may be involved in transcriptional regulation.
Synonyms:	Zinc finger protein 665, ZFP160L
Note:	Molecular Weight: 70228 Da



[View online »](#)

Product images:

ZNF665 Antibody (N-term) western blot analysis in HL-60 cell line lysates (35 ug/lane). This demonstrates the ZNF665 antibody detected the ZNF665 protein (arrow).



ZNF665 Antibody (N-term) immunohistochemistry analysis in formalin fixed and paraffin embedded human brain tissue followed by peroxidase conjugation of the secondary antibody and DAB staining. This data demonstrates the use of ZNF665 Antibody (N-term) for immunohistochemistry. Clinical relevance has not been evaluated.