

## Product datasheet for **AP54705PU-N**

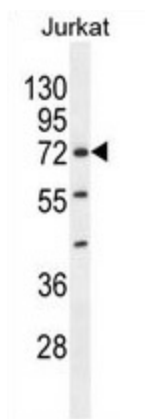
### ZNF648 (N-term) Rabbit Polyclonal Antibody

#### Product data:

Product Type:	Primary Antibodies
Applications:	WB
Recommended Dilution:	ELISA: 1:1;000. Western blot: 1:100~500.
Reactivity:	Human
Host:	Rabbit
Isotype:	Ig
Clonality:	Polyclonal
Immunogen:	KLH conjugated synthetic peptide between 48-77 amino acids from the N-terminal region of human ZNF648
Specificity:	This antibody detects ZNF648 (N-term).
Formulation:	PBS with 0.09% (W/V) sodium azide State: Aff - Purified State: Liquid Ig fraction
Concentration:	lot specific
Purification:	Protein A column followed by peptide affinity purification
Conjugation:	Unconjugated
Storage:	Store at 2 - 8 °C for up to six months or (in aliquots) at -20 °C for longer. Avoid repeated freezing and thawing.
Stability:	Shelf life: one year from despatch.
Gene Name:	zinc finger protein 648
Database Link:	<a href="#">Entrez Gene 127665 Human Q5T619</a>
Background:	May be involved in transcriptional regulation.
Synonyms:	Zinc finger protein 648
Note:	<b>Molecular Weight:</b> 62341 Da



[View online »](#)

**Product images:**

ZNF648 Antibody (N-term) western blot analysis in Jurkat cell line lysates (35 ug/lane). This demonstrates the ZNF648 antibody detected the ZNF648 protein (arrow).