

Product datasheet for **AP54702PU-N**

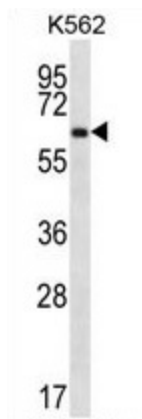
ZNF623 (C-term) Rabbit Polyclonal Antibody

Product data:

| | |
|-----------------------|--|
| Product Type: | Primary Antibodies |
| Applications: | WB |
| Recommended Dilution: | ELISA: 1:1;000. Western blot: 1:100~500. |
| Reactivity: | Human |
| Host: | Rabbit |
| Isotype: | Ig |
| Clonality: | Polyclonal |
| Immunogen: | KLH conjugated synthetic peptide between 513-536 amino acids from the C-terminal region of human ZNF623 |
| Specificity: | This antibody detects ZNF623 (C-term). |
| Formulation: | PBS with 0.09% (W/V) sodium azide State: Aff - Purified State: Liquid Ig fraction |
| Concentration: | lot specific |
| Purification: | Protein A column followed by peptide affinity purification |
| Conjugation: | Unconjugated |
| Storage: | Store at 2 - 8 °C for up to six months or (in aliquots) at -20 °C for longer. Avoid repeated freezing and thawing. |
| Stability: | Shelf life: one year from despatch. |
| Gene Name: | zinc finger protein 623 |
| Database Link: | Entrez Gene 9831 Human O75123 |
| Background: | ZNF623 may be involved in transcriptional regulation. |
| Synonyms: | Zinc finger protein 623, KIAA0628 |
| Note: | Molecular Weight: 61392 Da |



[View online »](#)

Product images:

ZNF623 Antibody (C-term) western blot analysis in K562 cell line lysates (35 ug/lane). This demonstrates the ZNF623 antibody detected the ZNF623 protein (arrow).