

Product datasheet for **AP54701PU-N**

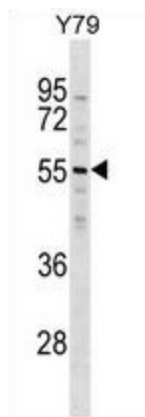
ZNF620 (N-term) Rabbit Polyclonal Antibody

Product data:

Product Type:	Primary Antibodies
Applications:	WB
Recommended Dilution:	ELISA: 1:1;000. Western blot: 1:100~500.
Reactivity:	Human
Host:	Rabbit
Isotype:	Ig
Clonality:	Polyclonal
Immunogen:	KLH conjugated synthetic peptide between 72-102 amino acids from the N-terminal region of human ZNF620
Specificity:	This antibody detects ZNF620 (N-term).
Formulation:	PBS with 0.09% (W/V) sodium azide State: Aff - Purified State: Liquid Ig fraction
Concentration:	lot specific
Purification:	Protein A column followed by peptide affinity purification
Conjugation:	Unconjugated
Storage:	Store at 2 - 8 °C for up to six months or (in aliquots) at -20 °C for longer. Avoid repeated freezing and thawing.
Stability:	Shelf life: one year from despatch.
Gene Name:	zinc finger protein 620
Database Link:	Entrez Gene 253639 Human Q6ZNG0
Background:	ZNF620 may be involved in transcriptional regulation.
Synonyms:	Zinc finger protein 620
Note:	Molecular Weight: 48503 Da



[View online »](#)

Product images:

ZNF620 Antibody (N-term) western blot analysis in Y79 cell line lysates (35 ug/lane). This demonstrates the ZNF620 antibody detected the ZNF620 protein (arrow).